

07.01.2013

Nb de blocs	Surface d'échange	L	H	Capacité		Poids vide	Tirants sup.
Nr of blocks	Exchange area m2			P	S	kg	Upper tie rods
		dm3	dm3	dm3	dm3	weight	Rep21
2	1	423	131	6	10	160	32311
4	2	635	343	8.5	17	200	32320
6	3	847	555	11	25	235	32330
8	4	1059	767	13.5	32	275	32340
10	5	1271	979	16	40	315	32350
12	6	1483	1191	18.5	47	355	32360
14	7	1695	1403	21	54	390	32370
16	8	1907	1615	23.5	61	430	32380
18	9	2119	1827	26	69	470	32390
20	10	2331	2039	28.5	76	510	32400
22	11	2543	2251	31	83	550	..

**GRAPHILOR**

**LE CARBONE-LORRAINE**  
DEPARTEMENT GENIE CHIMIQUE  
TOUR MANHATTAN, CEDEX 21, F. 92095 PARIS LA DEFENSE 2, FRANCE.

ANNEE/Year:  N°:

VOLUME/Capacity:  S:  6 bar

PE:  9 bar

TYPE: **GM8** Nb PASSES PROCESS/SERVICE: **1/1**

GRAPHILOR **BS** Nb de blocs:  Ref. LCL:

N° DE CDE CLIENT:  POIDS NET (kg):

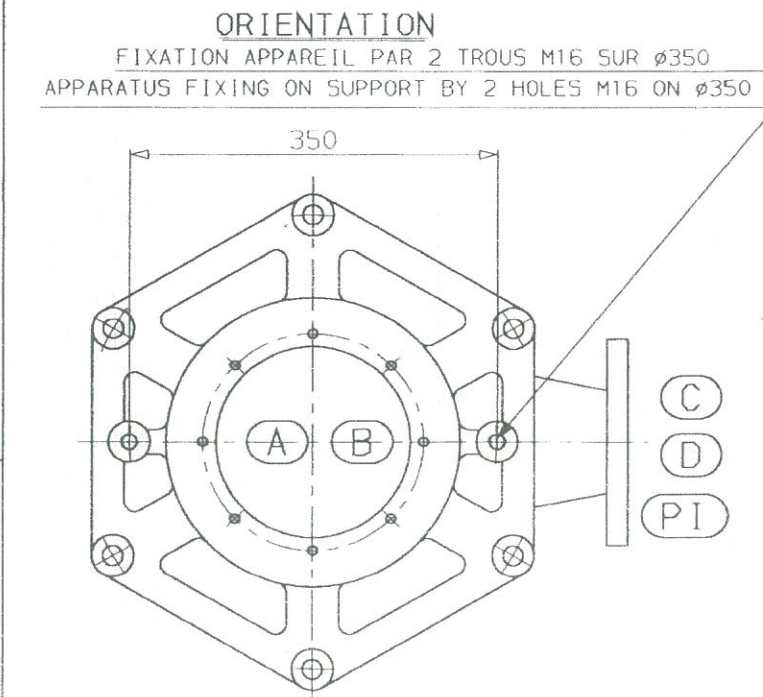
REPERE UTILISATEUR:  User equipment ref.

Capacité:  Press. EMBE:  Press. EPREUVE:  Temp. EMBE:  Temp. EPREUVE:

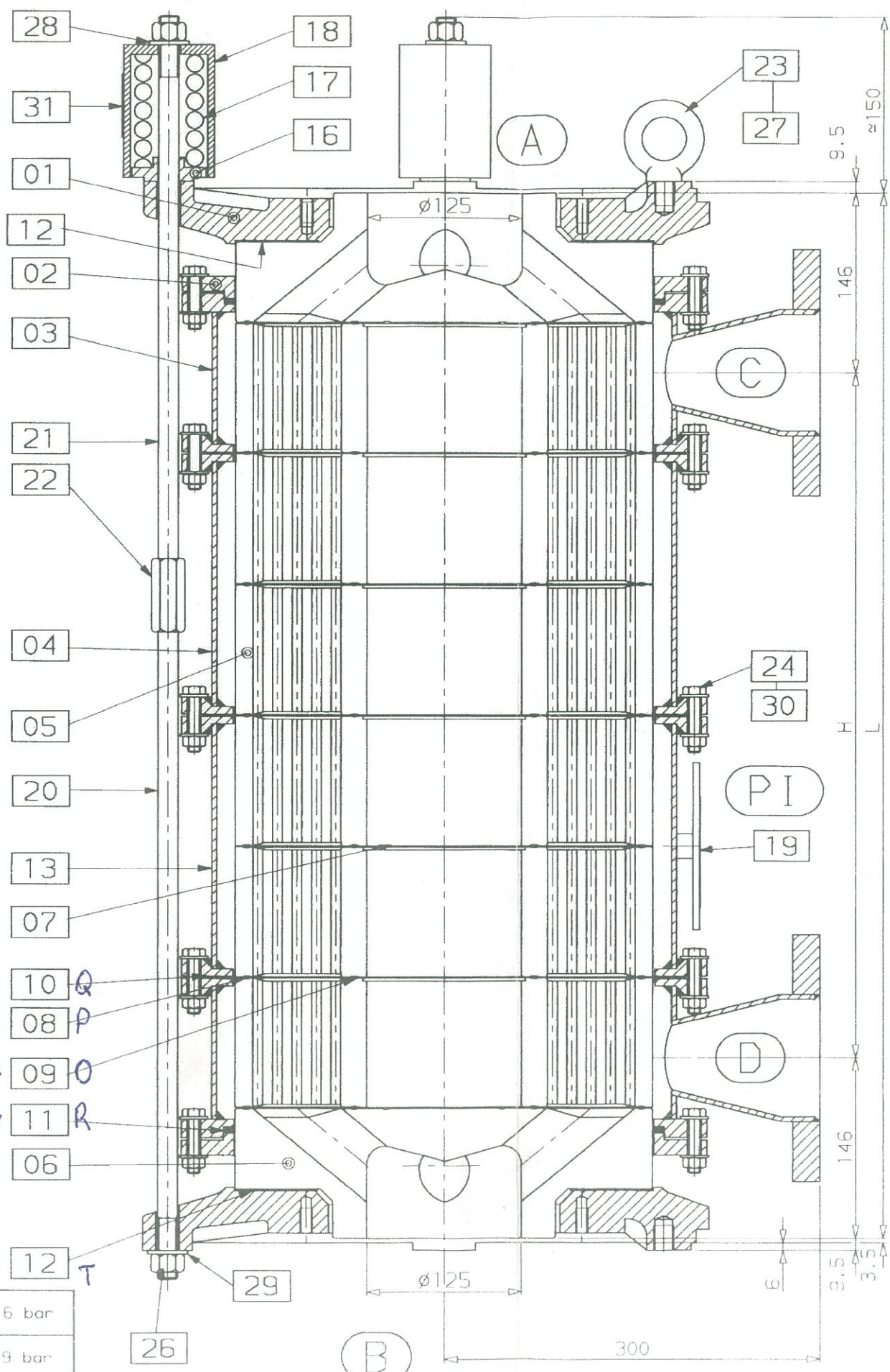
PROCESS: **6 9 165°**

SERVICE: **6 9 165°**

**ECHANGEUR POLYBLOC**  
POLYBLOC HEAT EXCHANGER  
MADE IN FRANCE F.54530 PAGNY SUR MOSELLE



PRESSION D'UTILISATION	PROCEDE	6 bar	SERVICE	6 bar
OPERATING PRESSURE	PROCESS	6 bar	SERVICE	6 bar
PRESSION D'EPREUVE	PROCEDE	9 bar	SERVICE	9 bar
TEST PRESSURE	PROCESS	9 bar	SERVICE	9 bar
SECTION DE PASSAGE	PROCEDE	130cm <sup>2</sup>	SERVICE	65cm <sup>2</sup>
PASSAGE SECTION	PROCESS	130cm <sup>2</sup>	SERVICE	65cm <sup>2</sup>



RACCORDEMENT			CONNECTION		
REP ITEM	DN	TYPE TYPE	PERCENTAGE DRILLING		OBSERVATION REMARK
A	Ø125		8 trous holes	Ø M10 sur on	Ø210
B	Ø125		8 trous holes	Ø M10 sur on	Ø210
C	80	PN16	8 trous holes	Ø 18 sur on	Ø160
D	80	PN16	8 trous holes	Ø 18 sur on	Ø160

31				Aluminium	
30	6x24	Washer W10		Aluminium	
		Rondelle W10		E24 zingue	
29	6	Washer W16		E24 zingue	
		Rondelle W16		E24 zingue	
28	6	Washer M16		E24 zingue	
		Rondelle M16		E24 zingue	
27	2	Washer JZ16		E24 zingue	
		Rondelle eventail JZ16		E24 zingue	
26	12	Nut HM16		CL5.6 zingue	
		Ecrou HM16		CL5.6 zingue	
25	4	Screw HM10x15		CL5.6 zingue	
		Vis HM10x15		CL5.6 zingue	
24	6x24	Bolt HM10x45		CL5.6 zingue	
		Boulon HM10x45		CL5.6 zingue	
23	2	Lifting ring		XC18	32573
		Anneau de levage		XC18	
22	6	Adjuster HM16x60		CL5	32530
		Tendeur HM16x60		CL5	
21	6	Upper tie rod		CL5.6	
		Tirant superieur		CL5.6	
20	6	Lower tie rod		CL5.6	32541 a partir de 4 blocs
		Tirant inferieur		CL5.6	
19	1	Name plate		Stainless steel	39467
		Plaque d'identite		Inox	
18	6	Spring housing		E24.2	32608
		Boitier a ressort		E24.2	
17	6	Spring		A 55 S 7	32500
		Ressort		A 55 S 7	
16	6	Lower washer		E24	32610
		Rondelle inferieure		E24	
15					
14					
13	1	Intermediate shell with support NP		E24.2	32234
		Enveloppe intermediaire avec pontet support PI		E24.2	
12	2	Protection ring Ø332x202x1		ASBESTOS FREE	32830
		Anneau de protection Ø332x202x1		ASBESTOS FREE	
11	2	Sliding gasket		EPDM	32840
		Joint coulissant		EPDM	
10	n	gasket between shell		ASBESTOS FREE	32820
		Joint entre enveloppe		ASBESTOS FREE	
9	n+1	Inner gasket between blocks		PTFE	32810
		Joint interieur entre blocs		PTFE	
8	n+1	Outer gasket between blocks		PTFE	32800
		Joint exterieur entre blocs		PTFE	
7	n-2	Baffle		GRAPHILOR	32100
		Chicane		GRAPHILOR	
6	2	Header hole Ø125		GRAPHILOR	32050
		Couvercle orifice Ø125		GRAPHILOR	
5	n	Block		GRAPHILOR	32000
		Bloc		GRAPHILOR	
4	n-2	Intermediate shell		E24.2	32230
		Enveloppe intermediaire		E24.2	
3	2	Shell with nozzle		E24.2	32225
		Enveloppe a tubulure		E24.2	
2	2	Flange of sliding gasket		E24.2	32210
		Bride de joint coulissant		E24.2	
1	2	Assembly plate		Castiron Ft.20C	32151
		Plaque d'assemblage		Fonte Ft.20C	

CLIENT - CUSTOMER:

No DE COMMANDE-ORDER No:

No D'AFFAIRE L.C.L. JOB No:

No DE COMMANDE L.C.L. ORDER No:

D'APRES PLAN-ACCORDING TO:

PLAN D'ENSEMBLE-ASSEMBLY DRAWING

**ECHANGEUR GM8 STANDARD**  
**EXCHANGER GM8**

PLAN No-DRAWING No: **8473A**

REFV. 00 09 10 11 12

**LE CARBONE-LORRAINE**  
DEPARTEMENT GENIE CHIMIQUE