

It is a series of blocks for sandwich assembling on connection surface CETOP R35 H-4.2-4-03, available in several executions for two or three way valve size 20 and 30, they offer a wide range uses. Here are represented the standard versions without the respective valves which may be supplied on request.

P and T line regulation and interception.

Connecting scheme	Type	Valve cavity	Technical schedules
Circuit 01 valve between P and T (2-1) 	20 CFT 01	S 20/2	
	30 CFT 01	S 30/2	
Circuit 61 valve between P and T (1-2) 	30 CFT 61	S 30/2	
Circuit 18P valves in pipe P 	30 CFT 18P	S 30/2	
Circuit 18T valves in pipe T 	30 CFT 18T	S 30/2	
Circuit 58 valve in pipe P 	30 CFT 58	S 30/2	
Circuit 60 valve in pipe T 	30 CFT 60	S 30/2	
Circuit 07 for pressure reducing valve on P 	20 CFT 07	S 20/3	
	30 CFT 07	S 30/3	

It is a series of blocks for sandwich assembling on connection surface CETOP R35 H-4.2-4-03, available in several executions for two or three way valves in size 20 and 30, they offer a wide range of uses. Here are represented the standard version without the respective valves, which may be supplied separately.

P and T line regulation and interception.

Connecting scheme	Type	Valve cavity	Technical schedules
<p>Circuit 20 with priority on P and exceeding in T</p>	30 CFT 20	S 30/3	
<p>Circuit 24 overcenter on T</p>	30 CFT 24	S 30/3	

A and B line regulation and interception.

Connecting scheme	Type	Valve cavity	Technical schedules
<p>Circuit 02 valves between A-B and T</p>	20 CFT 02	S 20/2	
	30 CFT 02	S 30/2	
<p>Circuit 02/A valve between A and T</p>	30 CFT 02/A	S 30/2	
<p>Circuit 02/B valve between B and T</p>	30 CFT 02/B	S 30/2	
<p>Circuit 03 valves between A and B</p>	30 CFT 03	S 30/2	

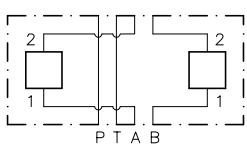
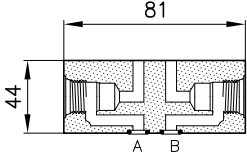
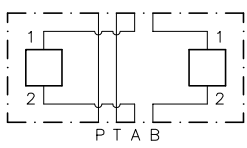
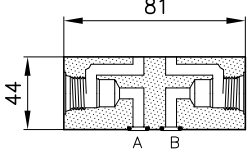
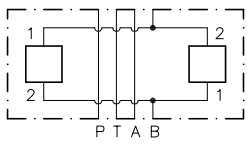
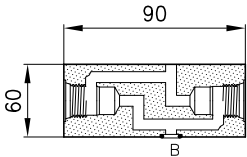
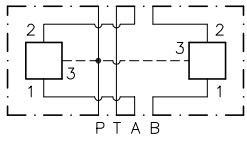
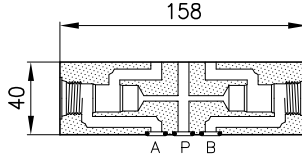
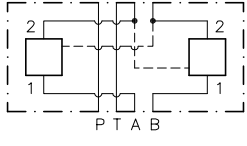
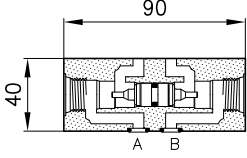
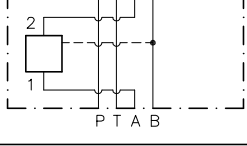
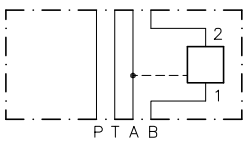
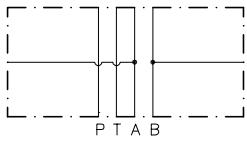
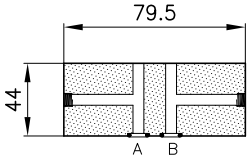
It is a series of blocks for sandwich assembling on connection surface CETOP R35 H-4.2-4-03, available in several executions for two or three way valves in size 20 and 30, they offer a wide range of uses. Here are represented the standard version without the respective valves, which may be supplied separately.

A and B line regulation and interception.

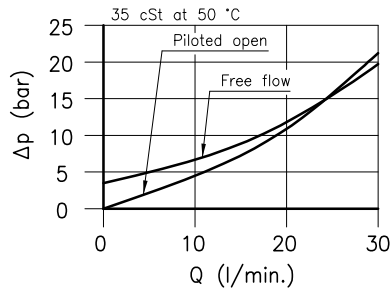
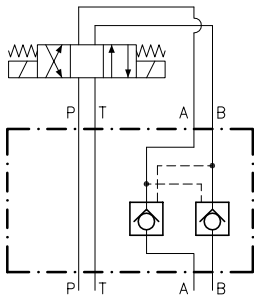
Connecting scheme	Type	Valve cavity	Technical schedules
<p>Circuit 08 pressure reducing valve on A</p>	30 CFT 08	S 30/3	
<p>Circuit 09 pressure reducing valve on B</p>	30 CFT 09	S 30/3	
<p>Circuit 25 overcenter on A and B</p>	30 CFT 25	S 30/3	
<p>Circuit 26 overcenter on A</p>	30 CFT 26	S 30/3	
<p>Circuit 27 overcenter on B</p>	30 CFT 27	S 30/3	
<p>Circuit 32 valve on pipe B (1-2)</p>	30 CFT 32	S 30/2	
<p>Circuit 32/A valve on pipe A (1-2)</p>	30 CFT 32/A	S 30/2	

It is a series of blocks for sandwich assembling on connection surface CETOP R35 H-4.2-4-03, available in several executions for two or three way valves in size 20 and 30, they offer a wide range of uses. Here are represented the standard version without the respective valves, which may be supplied separately.

A and B line regulation and interception.

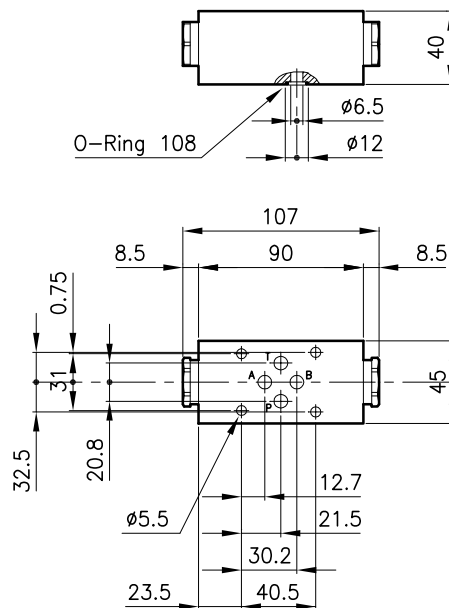
Connecting scheme	Type	Valve cavity	Technical schedules
<p>Circuit 33 valves on pipe A and B (1-2)</p>  	30 CFT 33	S 30/2	
<p>Circuit 34 valves on pipe A and B (2-1)</p>  	30 CFT 34	S 30/2	
<p>Circuit 18B valves on pipe B</p>  	20 CFT 18B	S 20/2	
<p>Circuit 57 pilot operated check valves</p>  	30 CFT 57/P	S 30/3	
<p>Circuit 57 pilot operated check valves</p>  	20 CFT 57	S 20/2	
<p>Circuit 57 pilot operated check valve on A or on B</p>  	20 CFT 57/A	S 20/2	
	20 CFT 57/B	S 20/2	
<p>Circuit 86 pressure switches on A and B</p>  	30 CFT 86	-	

Technical features



Valves (For features see catalogue 05.050)	CAE 20/M
Max. flow (l/min.)	30
Max. pressure (bar)	315
Pilot ratio	5:1
Fluid viscosity range (cSt)	2.8 - 380
Fluid temperature range (°C)	-20 +80
Mass (with aluminium body) (kg)	0.560
Hydraulic fluid; mineral oil HM and HV	ISO 6074
Recommended filtration; 19/15 ISO 4466 (25 μ absolutes)	
Standard seals in Polyurethane and Buna N	
Standard body in aluminium, (on request in cast iron)	

Dimensions



Ordering informations

CAE 20/M-CFT 57

Valves type _____

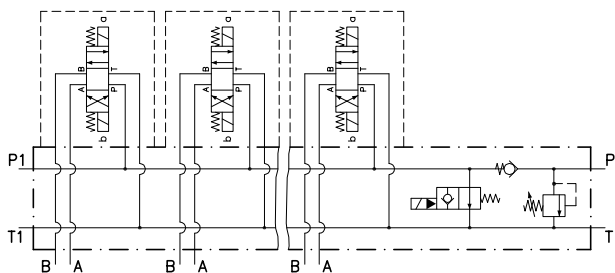
Standard spring _____
M = 3.5 bar

Version _____

Codes:

CAE 20/M-CFT 57 22 011 117

Technical features



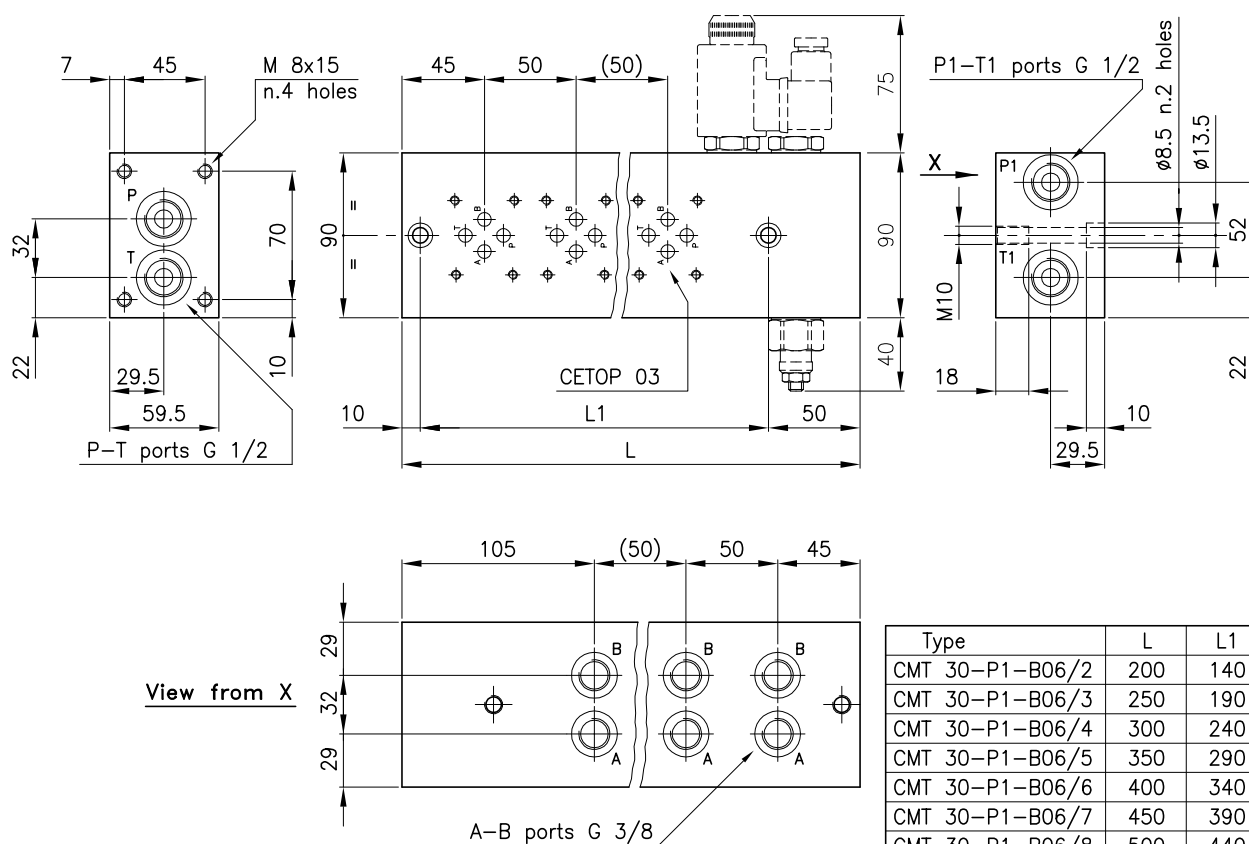
These are basic modular plates paralleling connected for solenoid valve provided with a connection surface CETOP R35 H-4.2-4-03.

Standard version in alluminium (max. pressure 315 bar). On request available also in steel.

The plates CMT 30-P1 show n° 3 cavities S 30/2 and are arranged for assembling check valve, unloading solenoid valve and pressure relief valve of the Series 30.

The cartridge valves Series 30 are to be ordered separately.

Dimensions



Ordering informations

CMT 30-P1-B06/3

Valves type

Parallel connection

(Pre-arrangement for pressure relief valve, unloading solenoid valve and check valve)

A e B ports

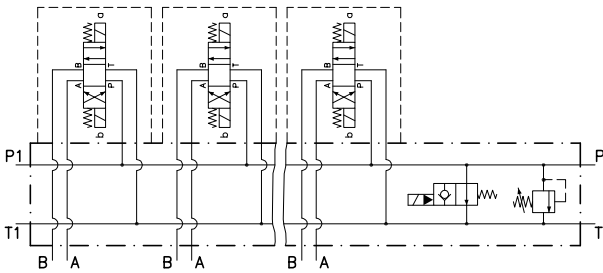
B06 = G 3/8

Sections number

Codes:

CMT 30-P1-B06/2	38 111 110
CMT 30-P1-B06/3	38 111 111
CMT 30-P1-B06/4	38 111 112
CMT 30-P1-B06/5	38 111 113
CMT 30-P1-B06/6	38 111 114
CMT 30-P1-B06/7	38 111 115
CMT 30-P1-B06/8	38 111 116

Technical features



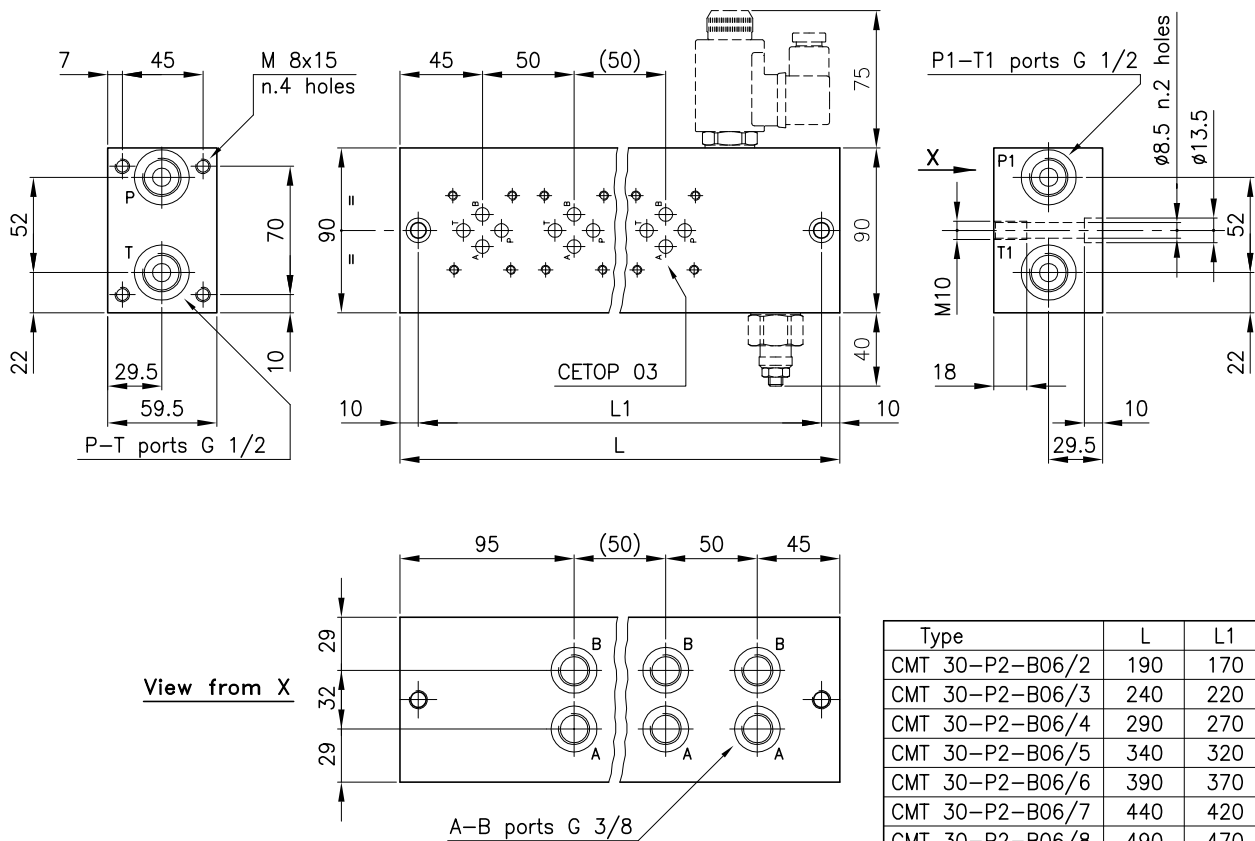
These are basic modular plates paralleling connected for solenoid valve provided with a connection surface CETOP R35 H-4.2-4-03.

Standard version in alluminium (max. pressure 315 bar). On request available also in steel.

The plates CMT 30-P2 show n° 2 cavities S 30/2 and are arranged for assembling unloading solenoid valve and pressure relief valve of the Series 30.

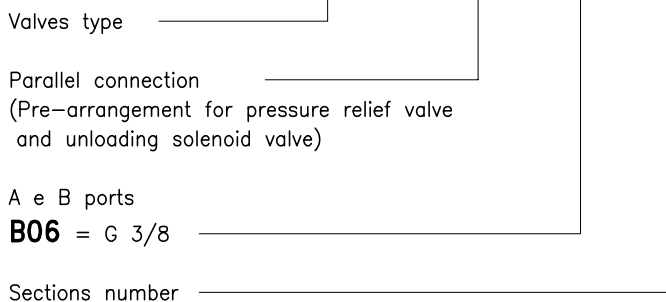
The cartridge valves Series 30 are to be ordered separately.

Dimensions



Ordering informations

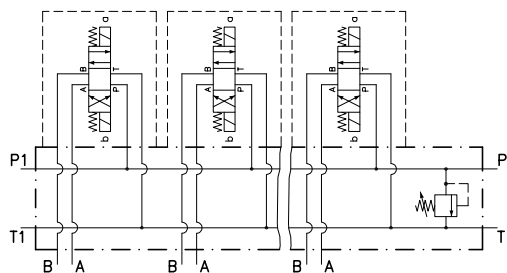
CMT 30-P2-B06/3



Codes:

CMT 30-P2-B06/2	38 111 117
CMT 30-P2-B06/3	38 111 118
CMT 30-P2-B06/4	38 111 119
CMT 30-P2-B06/5	38 111 120
CMT 30-P2-B06/6	38 111 121
CMT 30-P2-B06/7	38 111 122
CMT 30-P2-B06/8	38 111 123

Technical features



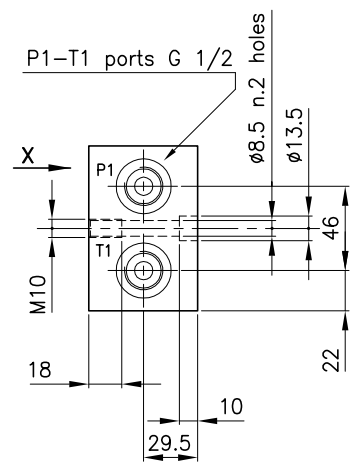
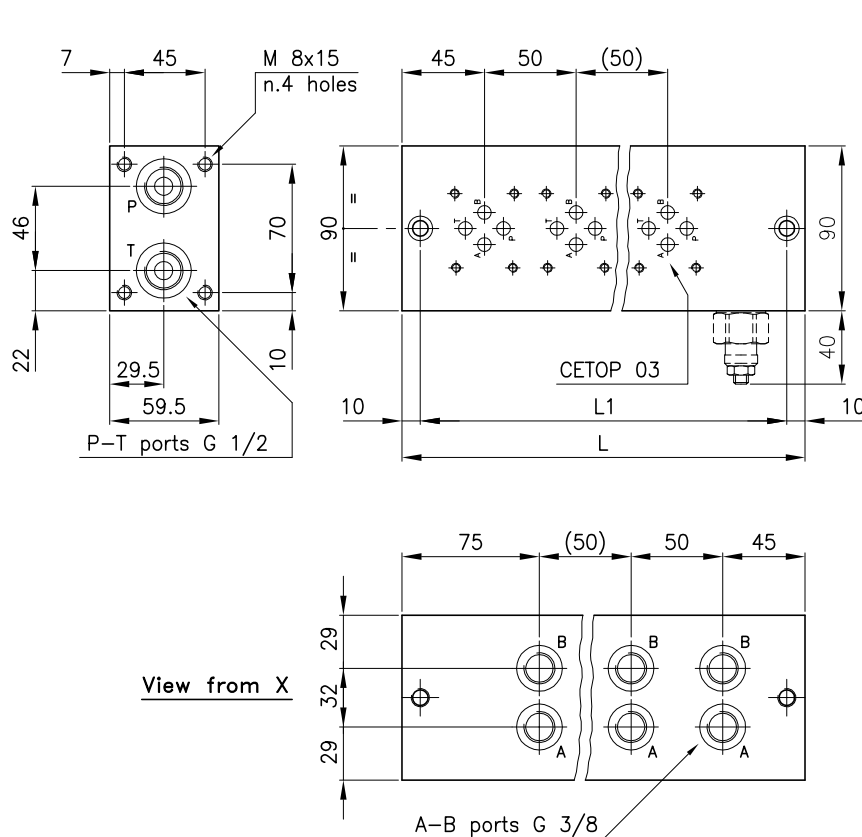
These are basic modular plates paralleling connected for solenoid valve provided with a connection surface CETOP R35 H-4.2-4-03.

Standard version in alluminium (max. pressure 315 bar). On request available also in steel.

The plates CMT 30-P3 show n° 1 cavities S 30/2 and are arranged for assembling e pressure relief valve of the Series 30.

The cartridge valves Series 30 are to be ordered separately.

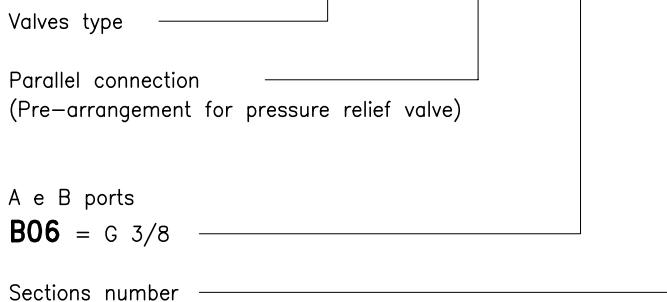
Dimensions



Type	L	L1
CMT 30-P3-B06/2	170	150
CMT 30-P3-B06/3	220	200
CMT 30-P3-B06/4	270	250
CMT 30-P3-B06/5	320	300
CMT 30-P3-B06/6	370	350
CMT 30-P3-B06/7	420	400
CMT 30-P3-B06/8	470	450

Ordering informations

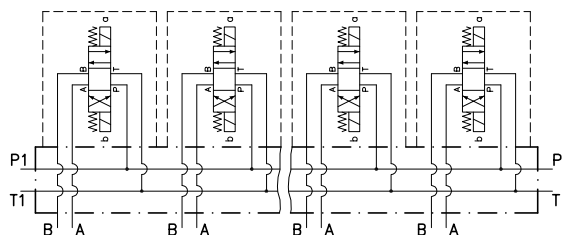
CMT 30-P3-B06/3



Codes:

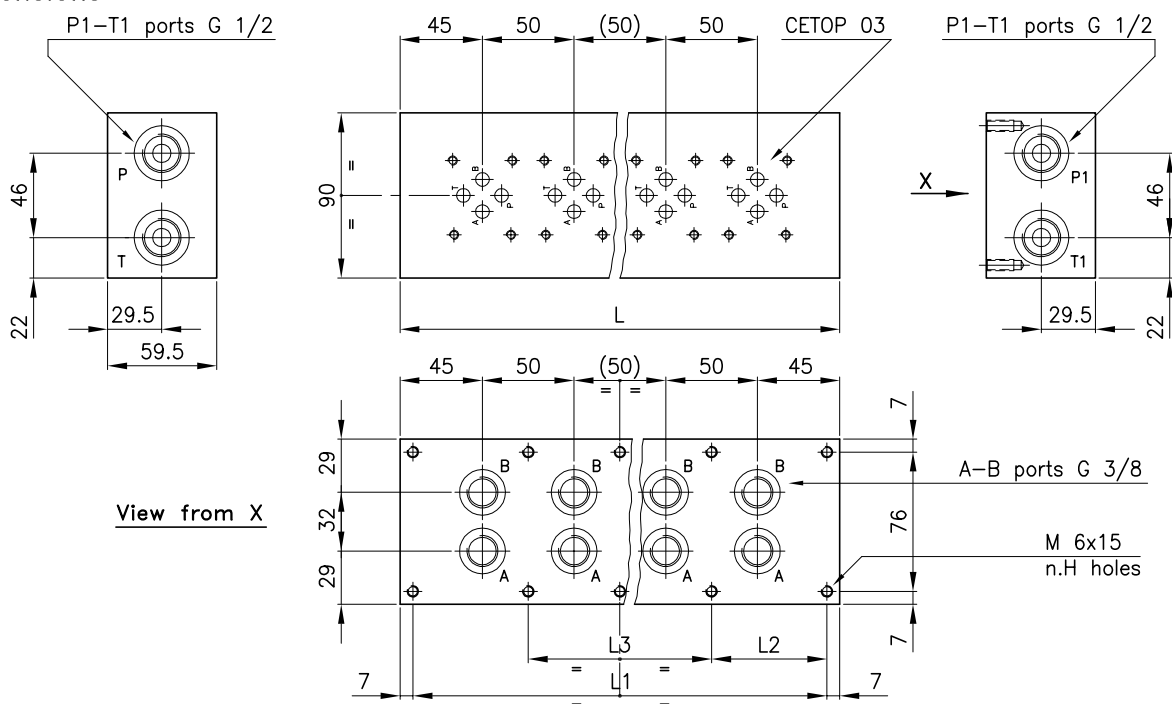
CMT 30-P3-B06/2	38 111 124
CMT 30-P3-B06/3	38 111 125
CMT 30-P3-B06/4	38 111 126
CMT 30-P3-B06/5	38 111 127
CMT 30-P3-B06/6	38 111 128
CMT 30-P3-B06/7	38 111 129
CMT 30-P3-B06/8	38 111 130

Technical features



These are basic modular plates paralleling connected for solenoid valve provided with a connection surface CETOP R35 H-4.2-4-03. Standard version in alluminium (max. pressure 315 bar). On request available also in steel.

Dimensions

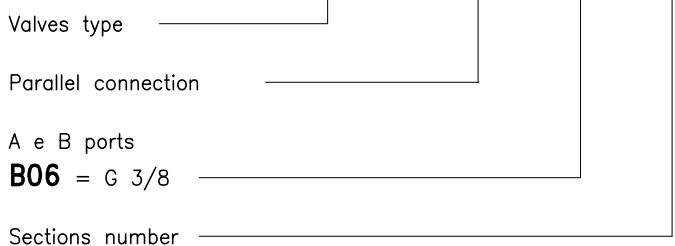


Type	L	H	L1
CMT 30-P0-B06/2	140	4	126
CMT 30-P0-B06/3	190	4	176
CMT 30-P0-B06/4	240	4	226
CMT 30-P0-B06/5	290	4	276

Type	L	H	L1	L2	L3
CMT 30-P0-B06/6	340	6	326	/	/
CMT 30-P0-B06/7	390	8	376	113	150
CMT 30-P0-B06/8	440	8	426	113	200
CMT 30-P0-B06/10	540	8	526	163	200

Ordering informations

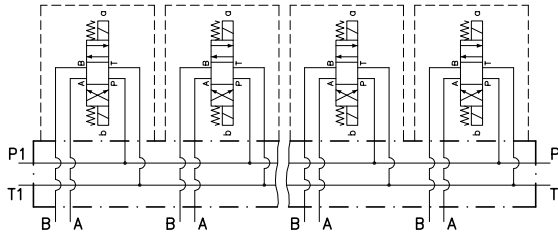
CMT 30-P0-B06/5



Codes:

CMT 30-P0-B06/2	38 144 183
CMT 30-P0-B06/3	38 144 184
CMT 30-P0-B06/4	38 144 185
CMT 30-P0-B06/5	38 144 186
CMT 30-P0-B06/6	38 144 187
CMT 30-P0-B06/7	38 144 188
CMT 30-P0-B06/8	38 144 189
CMT 30-P0-B06/10	38 144 190

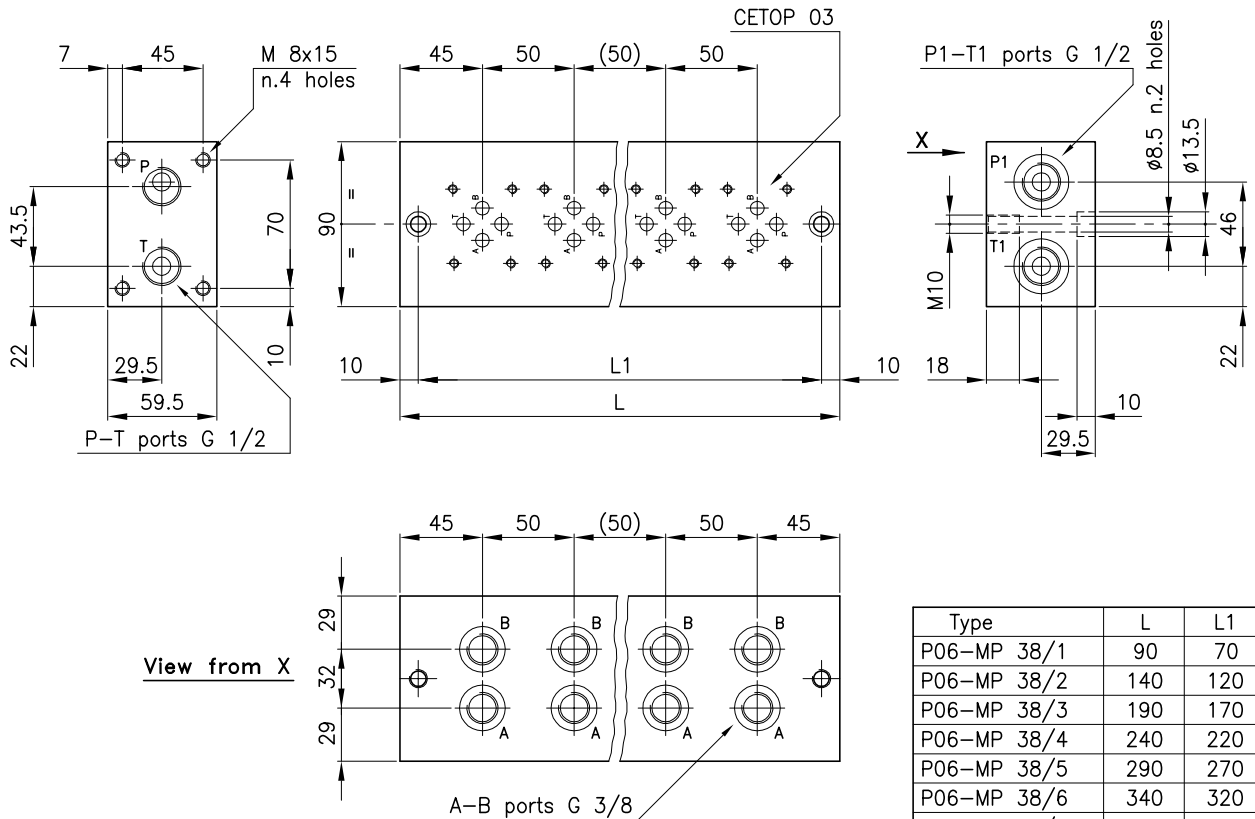
Technical features



These are basic modular plates paralleling connected for solenoid valve provided with a connection surface CETOP R35 H-4.2-4-03.

Standard version in alluminium (max. pressure 315 bar).
On request available also in steel.

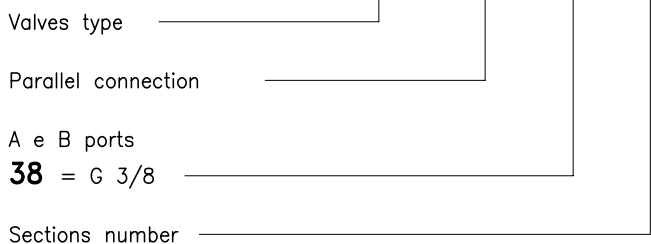
Dimensions



Type	L	L1
P06-MP 38/1	90	70
P06-MP 38/2	140	120
P06-MP 38/3	190	170
P06-MP 38/4	240	220
P06-MP 38/5	290	270
P06-MP 38/6	340	320
P06-MP 38/7	390	370
P06-MP 38/8	440	420

Ordering informations

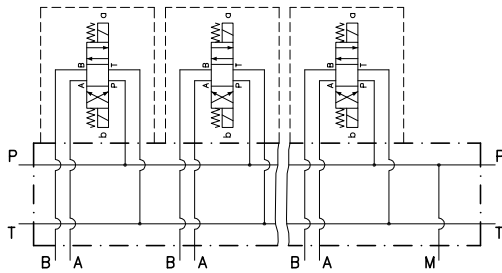
P06-MP 38/4



Codes:

P06-MP 38/1	38 144 205
P06-MP 38/2	38 144 150
P06-MP 38/3	38 144 151
P06-MP 38/4	38 144 152
P06-MP 38/5	38 144 153
P06-MP 38/6	38 144 154
P06-MP 38/7	38 144 155
P06-MP 38/8	38 144 156

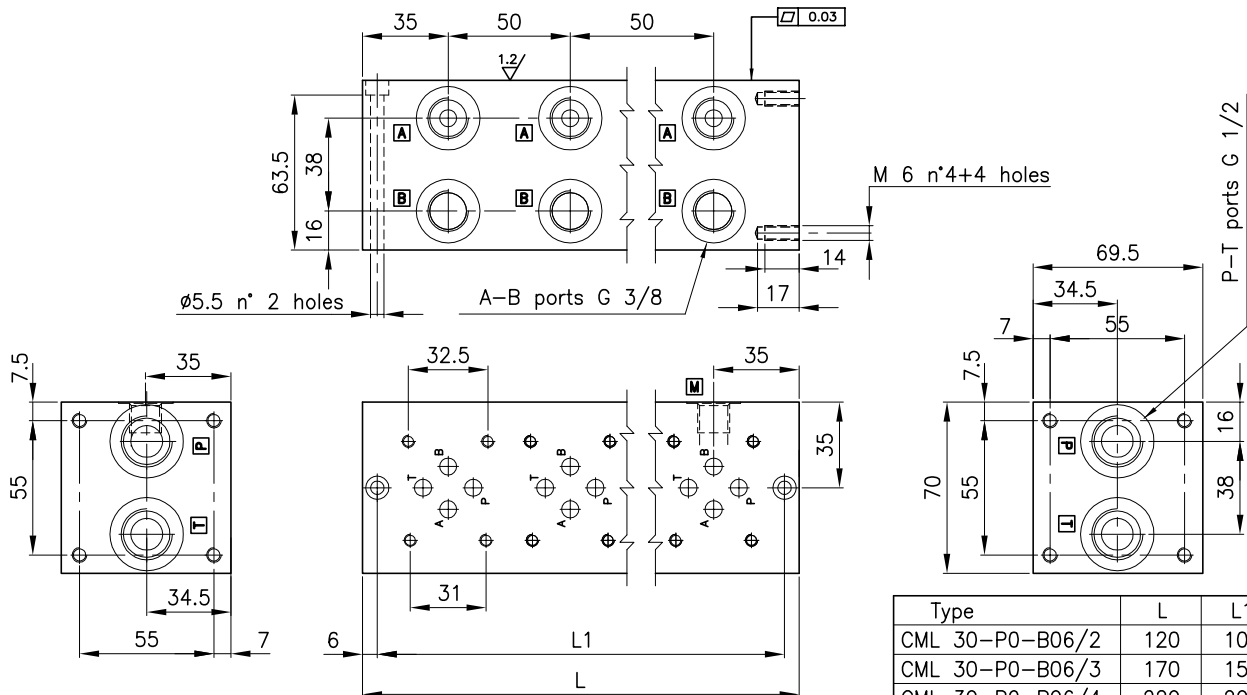
Technical features



These are basic modular plates paralleling connected for solenoid valve provided with a connection surface CETOP R35 H-4.2-4-03.

Standard version in alluminium (max. pressure 315 bar).
On request available also in steel.

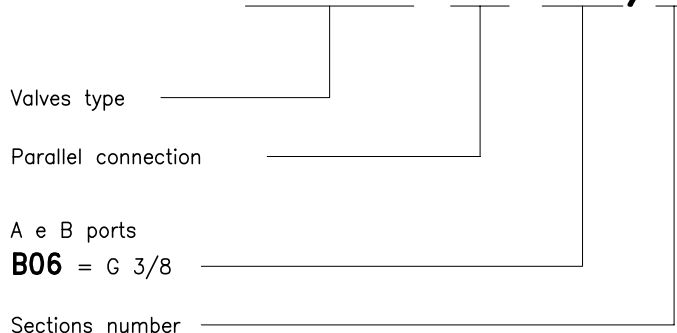
Dimensions



Type	L	L1
CML 30-P0-B06/2	120	108
CML 30-P0-B06/3	170	158
CML 30-P0-B06/4	220	208
CML 30-P0-B06/5	270	258
CML 30-P0-B06/6	320	308
CML 30-P0-B06/7	370	358
CML 30-P0-B06/8	420	408
CML 30-P0-B06/9	470	458
CML 30-P0-B06/10	520	508

Ordering informations

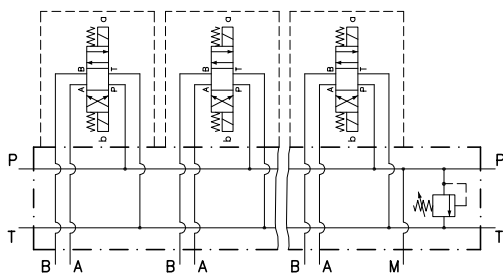
CML 30-P0-B06/3



Codes:

CML 30-P0-B06/2	38	144	212
CML 30-P0-B06/3	38	144	213
CML 30-P0-B06/4	38	144	214
CML 30-P0-B06/5	38	144	215
CML 30-P0-B06/6	38	144	216
CML 30-P0-B06/7	38	144	217
CML 30-P0-B06/8	38	144	218
CML 30-P0-B06/9	38	144	219
CML 30-P0-B06/10	38	144	220

Technical features



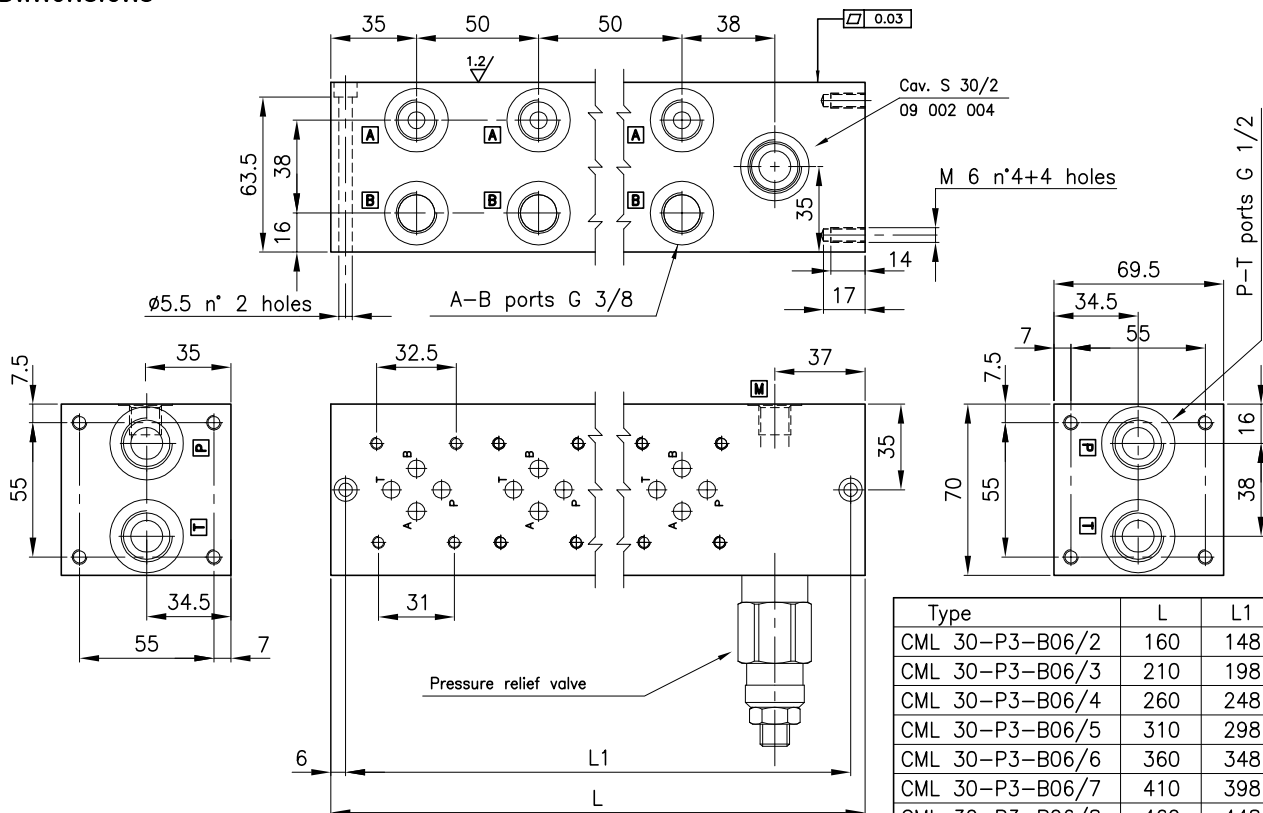
These are basic modular plates paralleling connected for solenoid valve provided with a connection surface CETOP R35 H-4.2-4-03.

Standard version in alluminium (max. pressure 315 bar). On request available also in steel.

The plates CML 30-P3 show n° 1 cavities S 30/2 and are arranged for assembling e pressure relief valve of the Series 30.

The cartridge valves Series 30 are to be ordered separately.

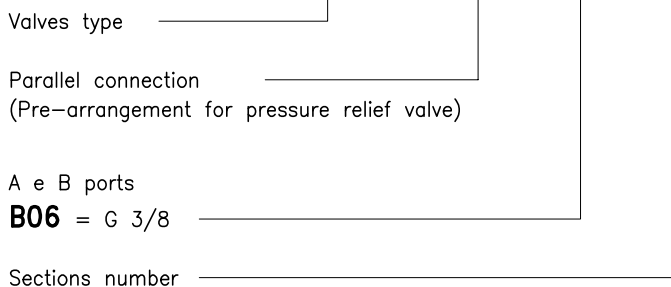
Dimensions



Type	L	L1
CML 30-P3-B06/2	160	148
CML 30-P3-B06/3	210	198
CML 30-P3-B06/4	260	248
CML 30-P3-B06/5	310	298
CML 30-P3-B06/6	360	348
CML 30-P3-B06/7	410	398
CML 30-P3-B06/8	460	448
CML 30-P3-B06/9	510	498
CML 30-P3-B06/10	560	548

Ordering informations

CML 30-P3-B06/3



Codes:

CML 30-P3-B06/2	38 144 222
CML 30-P3-B06/3	38 144 223
CML 30-P3-B06/4	38 144 224
CML 30-P3-B06/5	38 144 225
CML 30-P3-B06/6	38 144 226
CML 30-P3-B06/7	38 144 227
CML 30-P3-B06/8	38 144 228
CML 30-P3-B06/9	38 144 229
CML 30-P3-B06/10	38 144 230