

Needle Cooler



Product Code: A20500

The Meech Needle Cooler provides perfect spot cooling for any small application. Specifically aimed at cooling sewing needles, the Needle Cooler avoids needle breakages and thread burn. The cooler delivers a continuous adjustable stream of cold air onto any sewing machine needle. A magnetic mounting bracket means the cooler can be fixed to virtually any metal surface giving the versatility to aim cooling exactly at the spot needed. It is powered solely by compressed air and can reduce temperatures by as much as 34°C below air inlet temperature.

Features

No moving parts

Stainless steel

28cm knuckle trunking

Magnetic base

Benefits

Low maintenance and easy to use

Suitable for harsh environments

Easy direction of cold airflow

Quick and easy mounting

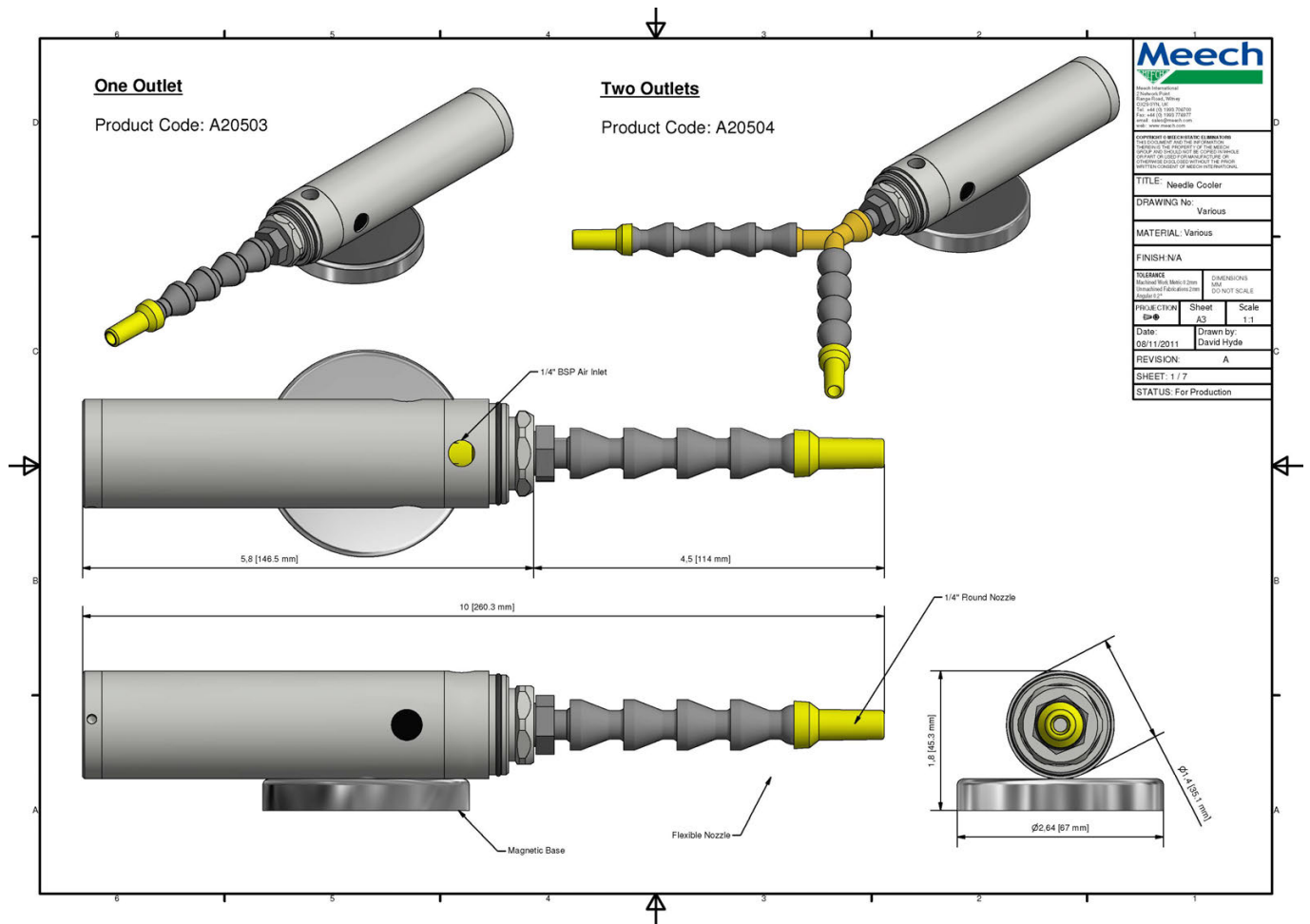
Technical Characteristics

Dimensions (mm)

(L) 148mm x (H) 45mm

Product Data Sheet

Published Date: 19.06.2015



Product shown in this document may be covered by one or more patents, patents applied for and/or registered designs and/or trade marks. For further information please refer to our Head Office or visit www.meech.com.

Meech International

UK: +44 1993 706 700
Hungary: +36 1 7977039

US: +1 330 564 2000
China: +86 400 820 0102

Belgium: +32 (0)80 670 204
India: +91 20-26159641

email: sales@meech.com
web: www.meech.com

