

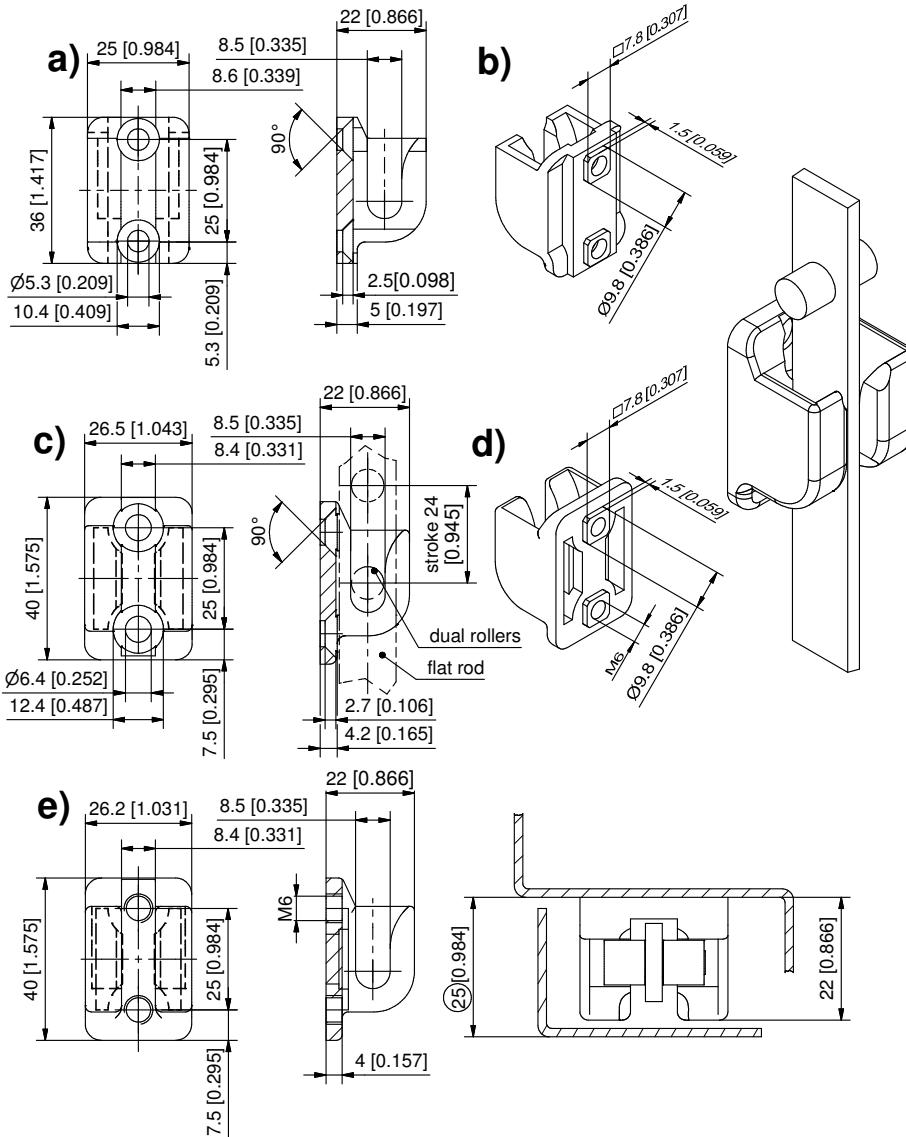
# 3-912 Dual Hook FS

for flat rods

Dual Hook for flat rods with dual rollers.  
a, c and e): Water- and dust-tight according to IP65 DIN EN 60529 with flat external seal.

## Material:

- a, b)
  - Dual hook: PA, black
- c, d)
  - Dual hook: zinc die, zinc plated
- e)
  - Dual hook: stainless steel AISI 316



material	version	Part-No.	see page
a)	PA Dual hook with countersunk for M5	208-1446.50-00000	
b)	PA Dual hook with threaded stubs for M5	208-1447.50-00000*	
c)	zinc die Dual hook with countersunk for M6	208-1402.00-00000	
d)	zinc die Dual hook with thread and threaded stubs for M6	208-1401.00-00000	
e)	stainless steel Dual hook with thread for M6	208-1439.95-00000	

Please order separately:

Water- and dust-tight according to IP65 DIN EN 60529 by:

Flat external seal 39x25 one side self-adhesive for version a), c), e) 208-1803.00-00000

Serrated screw 09.04

Countersunk machine screw 09.05

Dual hook for quick installation (tool-less installation) 04.44, 04.47

\*Price and delivery time on request