

Manual Pumps (P-4 Series)

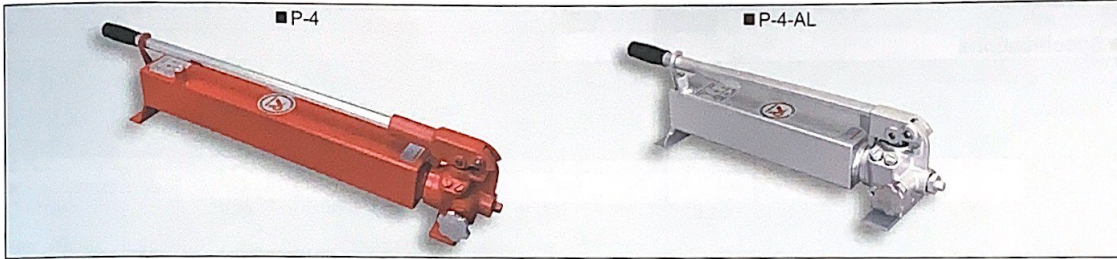
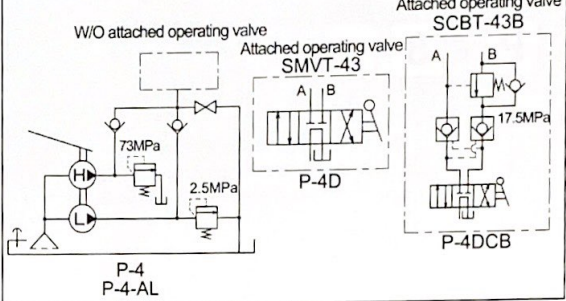
Model code structure



Blank : Standard model
 -V : Vertical model
 Blank : For single-acting cylinders
 D : For double-acting cylinders
 DCB : For double-acting cylinders with counterbalance valve
 -AL : For single-acting lightweight aluminum model
 Series No.
 Manual pump

*The P-4DCB is a make-to-order product.

P-4 series hydraulic circuit diagrams



Specifications

Model	Maximum operating pressure MPa		Discharge volume cm ³ /stroke		Outlet port Rc	Hydraulic oil	Tank oil volume cm ³	Effective oil volume cm ³	Lever load N (at 70 MPa)	Approx. weight kg	Attached operating valve
	High pressure	Low pressure	At high pressure	At low pressure							
P-4 (-V)	70	2	2.3	13.0	3/8	ISO VG32	2500	1800	338	11.5	—
P-4D (-V)										13.5	SMVT-43
P-4DCB (-V)										15.5	SCBT-43B
P-4-AL (-V)										6.3	—

*The oil tank is filled up with hydraulic oil before shipment.

