

P-Type Coalescer Element

For the Separation of Water and Solids from Aviation Fuels according to EI 1581 5th Edition, Category C, Type S & S-LW.

Filter water separators are fitted with coalescer and separator elements and used on aircraft refuelling vehicles, hydrant dispensers and other mobile fuelling equipment. They are also used in fixed fuelling installations and tank farms. FAUDI Aviation coalescers are commonly used in other branches of industry such as refineries, petrochemical plants and marine applications where high efficiency filtration and separation is required.

Technical Details

Tested and approved to EI 1581 Cat. C Type S & S-LW

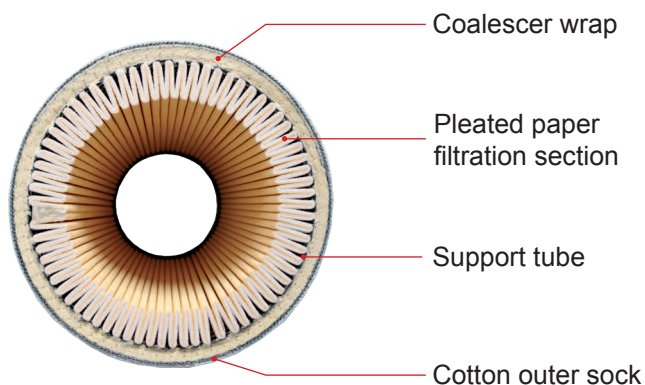
Nominal Filtration:	1µm
Change-out Differential Pressure:	1.1 bar (15 psi)
Test- /Burst Pressure:	5.2 bar (75 psi)
Recommended Service Time (max.):	24 months ¹
Recommended Storage Time (max.):	24 months ^{1&2}
Operating Temperature:	min. -30°C / max. 80°C
Flow Direction:	In to Out
Outside Diameter:	152 mm (6")

¹ Manufacturer recommendation

² Original packaging, 20°C and max. 50% humidity
after date of shipment out of stock of FAUDI Aviation GmbH

Standard Design

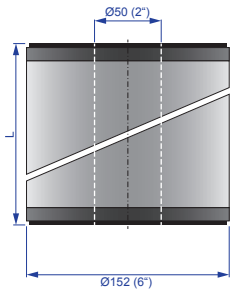
- Inner tube in epoxy coated steel
- Seals in NBR (Buna-N)
- End caps made out of Polyamid/reinforced glass fibre
- Labeling of end caps acc. to EI specification
(date of manufacturing, ID-Number, etc.)



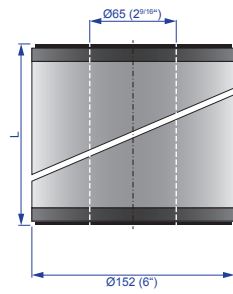
P-Type Coalescer Element

Sample of Marking

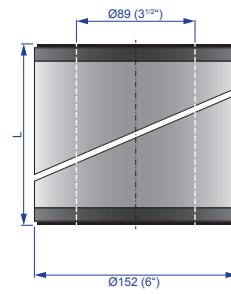
Article code: **P.1-842**



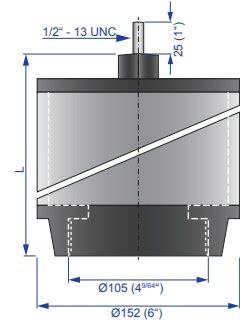
Endcap Design 1



Endcap Design 3



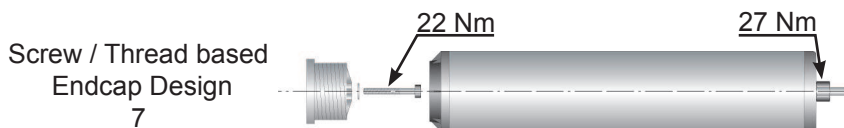
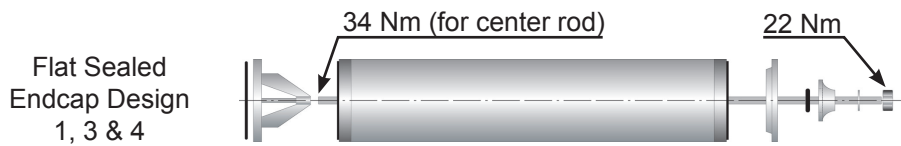
Endcap Design 4



Endcap Design 7

Flat sealed (open end)				Screw / thread based			
Nominal Length L (Incl. Seal)		Endcap Design			Nominal Length L		Endcap Design
mm	Zoll	1	3	4	mm	Zoll	7
285	11 1/4		P.3- 279	P.4- 279			
369	14 1/2		P.3- 362	P.4- 362	351	14 13/16	P.7- 362
473	18 5/8		P.3- 467	P.4- 467			P.7- 467
565	22 1/4		P.3- 559	P.4- 559	565	22 1/4	P.7- 559
733	28 7/8		P.3- 727	P.4- 727	705	27 3/4	P.7- 727
848	33 3/8	P.1- 842	P.3- 842	P.4- 842	834	32 7/8	P.7- 842
971	38 1/4		P.3- 965	P.4- 965	965	38	P.7- 965
1099	43 1/4		P.3-1093	P.4-1093	1114	43 7/8	P.7-1093
1428	56 1/4		P.3-1422	P.4-1422	1418	56 7/8	P.7-1422

Torques



ft/lbs	inch/lbs	kg/m	Nm
17	200	2,30	22
20	240	2,80	27
25	300	3,50	34