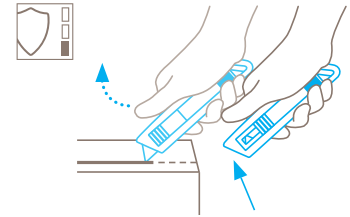


TECHNICAL DATA SHEET

SECUNORM PROFI NO. 07152

Safety technology



Automatic blade retraction – a high degree of safety

The automatic blade retraction of the SECUNORM PROFI guarantees a high degree of safety from cut injuries. As soon as you have started to cut, take your thumb off the slider. The blade can thus withdraw back into the handle immediately after leaving the material being cut.



SAFETY KNIFE WITH AUTOMATIC BLADE RETRACTION DESIGNED FOR ALL NORMAL CUTTING JOBS.

Order No. 07152.02

A classic for right handed users. With trapezoid blade.

Do you sometimes wonder why we've never bothered to update our SECUNORM PROFI? After all, it is four decades old! Well to be honest, it has never been necessary. Yesterday's pioneer is today's classic. A timeless shape, a robust form, a versatile ability: what more could you want? The „forefather“ of all of our TÜV-tested safety knives, the SECUNORM PROFI features automatic blade retraction and has therewith protected generations of users.

Ergonomic handle

Why has the SECUNORM PROFI been so popular for as long as we know? Because, for one, it sits comfortably and valuably in your hand. You can thus complete even demanding cutting work without any fatigue.

Hard to take up

The plastic insert of the SECUNORM PROFI is inside an aluminium handle. The stable design makes it ideal for high cutting frequencies and a long life.

2-cutting edge blade

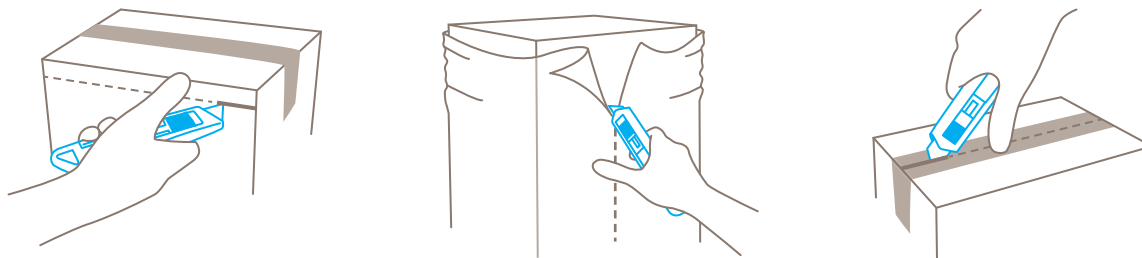
Before you have to change the quality blade, you can turn it over once. This doubles the usage time of the blade - and reduces your energy consumption. Because your product will cut again like new.

Without tools

You can kiss goodbye to complex blade changes. In the truest sense of the word. You only have to push the plastic insert out of the handle and exchange the old blade for a new one.

Safe fit

A SECUNORM PROFI will not let you down. But it can be hung down! Just pull the strap through the eyelet and let the cutting tool hang from your wrist or belt loop.



PRODUCT FEATURES

Technical features

High safety	Tool-less blade change	Very abrasion resistant	Very ergonomic
2-times usable blade	Extended blade length	Cutting depth	For right hander
Lanyard hole	Printable for promotional purposes		

Main cutting materials

Cardboard: up to 3-ply	Wrapping, stretch, and shrink foil	Plastic strapping band	Tape
Bagged goods	Layers of foil or paper	Yarn, cord	Textile, material

Installed blade



NO. 5232
0.63 mm, deep-edged

Optional blade



NO. 52
0.63 mm



NO. 5233
0.63 mm, 1-sided ground-edge



NO. 610
0.63 mm, stainless



NO. 65232
0.63 mm, rounded blade tips, deep-edged



NO. 85232
0.63 mm, deep-edged, TiN coated



NO. 85233
0.63 mm, 1-sided ground-edge, TiN coated



NO. 8852
0.63 mm, TiN coated



NO. 852
0.63 mm, stainless, TiN coated



NO. 56
0.63 mm

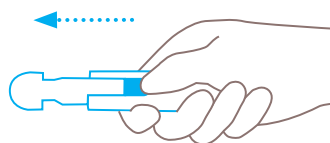


NO. 5634
0.63 mm, rounded blade tips

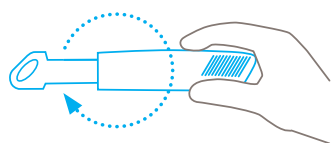


NO. 60
0.63 mm

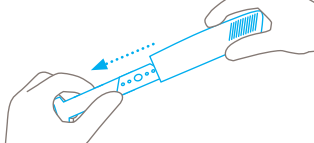
BLADE CHANGE



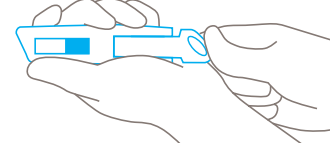
Use the slider to push the plastic insert back and out of the handle. Don't pull the insert while holding onto the slider.



Turn the knife through 180°.



Pull the central mechanism in the direction of the arrow. Keep hold of the blade with your thumb. Reverse or replace the blade and re-install the plastic insert. Make sure you position the new or turned blade exactly over the locating lug.



Never hold your hand in front of the blade exit while pushing the slider mechanism back into the handle!

SERVICES OFFERED



Safety poster



Training video



Technical data sheet



Consulting service

PRODUCT AND PACKAGING DETAILS

Order No.	NO. 07152.02	Packaging unit	1 in single unit box
Knife size (L x W x H)	142 x 16 x 31 mm	Size Single unit box	154 x 22 x 38 mm
Weight knife	83.5 g	Weight single unit box	92.0 g
Basic material	Aluminium	EAN Code single unit box	4002632900396
Extended blade length	21 mm	Quantity in outer pack	10 knives
Cutting depth	19.6 mm	Size outer pack	115 x 80 x 160 mm
		Weight outer pack	970.0 g
		EAN Code outer pack	4002632951718
		Customs tariff number	82119300

SAFETY CERTIFICATE

Date of issue	27.08.2010
Certification	GS certificate NO. S 60033010

Certificates and awards



SECURITY ADVICE

To ensure that you use your new MARTOR knife safely and most effectively, please read and note the following user-instructions. Please keep the written guide in a safe place so that you can access it at any time.

1. General application instructions: Please use the product carefully for cutting work only and not for any purposes other than those that are intended. Please take the correct handling and the proper use of the knives into account in this regard.

2. Special application instructions to avoid the danger of injuries: Only use knives that are in perfect condition and have sharp, clean and undamaged blades. employ the utmost care when handling the knives.

CAUTION: The blade is sharp and can result in serious and deep cuts. Therefore, never reach into the blade! To reduce the danger of injuries, hold the hand that is being used to restrain and stabilise the cutting base in such a manner that the restraining hand or even other body parts are not endangered in the event that the knife slips.

3. Replacement of spare parts: Replace any blades that become dull at the right time! Use only the replacement blades

available at MARTOR for this purpose. Dispose of old blades in a proper fashion. They should not be placed in a waste paper bin, as this poses a considerable danger of injuries. Never perform any repairs yourself. If the knife displays signs of aging or other wear, e.g. function problems when changing the blade or in the handling of the blade pushers, then it must be rejected and replaced with a new one. Any modifications or manipulations to the product are prohibited, as they impair the product safety. **CAUTION:** There is an extremely high danger of injuries here!

4. Non-use of the knife: Always secure the blade in such a way that injuries due to cuts are excluded. Store the knife in a secure place.

5. Care instructions: Always keep the knife clean and do not expose it to unnecessary humidity to safeguard a long service life.

CAUTION: No liability will be assumed for consequential losses. Subject to technical changes and errors! This knife does not belong in the hands of children!

ACCESSORIES

BELT HOLSTER S WITH CLIP NO. 9920



What do you do with your cutting tools when you are not actually using them? The MARTOR BELT HOLSTER S is a robust holder that allows you to carry all compact MARTOR cutters as well as our safety scissors at all times. In addition, the compartments are designed to allow you to load different tools: for example you can also carry a pen or a pack of blades. The MARTOR BELT HOLSTER is the ideal place to stow your tools safely when moving from A to B - and have them at hand, as soon as they are required.

HOLSTER SMALL NO. 9842



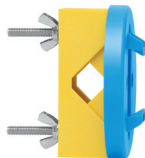
This blue plastic HOLSTER is just like the black version, only smaller. Use it to safely store and transport SECUNORM cutters MULTISAFE, MULTISSET, PROFI, PROFI LIGHT, PROFI25 and PROFI40. With this holster on your hip, your cutter will always be within grasping range.

USED BLADE CONTAINER NO. 9810



You can fill the USED BLADE CONTAINER with the content of your SAFEBOX. Or directly with your used blades. When the box is full, turn the lid until it shuts. Now the box cannot be reopened. The next step is to safely and completely dispose of the filled USED BLADE CONTAINER.

WALL MOUNT BRACKET USED BLADE CONTAINER NO. 9845



Include it in your order now! With this mounting bracket you can fix your USED BLADE CONTAINER to a central location. Use the clamp and screws and nuts supplied with the product to attach it to either a pipe or a rod.

SAFEBOX NO. 108000



The SAFEBOX is large enough to store a large number of used blades safely. And at the same time, it is compact enough to carry with you. The two slits are not only used for filling, but also to „shorten“ your snap-off blades. When your SAFEBOX is full, empty it into your USED BLADE CONTAINER.

SAFETY DEVICE NO. 9800



You can attach a U-shaped safety device to all SECUNORM PROFI cutters to prohibit blade change. When in place, the safety device can only be removed by leverage with a tool. The device works by disabling retraction of the plastic insert. Effectively hindering unqualified access to the blade.

POCKET CLIP NO. 9853



The pocket clip fits all right handed SECUNORM PROFI cutters. Just push the clip through the eyelet at the end of the handle. Use it to attach your cutter to your trouser pocket, for example.

MANUFACTURER

MARTOR KG | Lindgesfeld 28 | 42653 Solingen | Germany
T +49 212 73870-0 | F +49 212 73870-90 | info@martor.de | www.martor.com