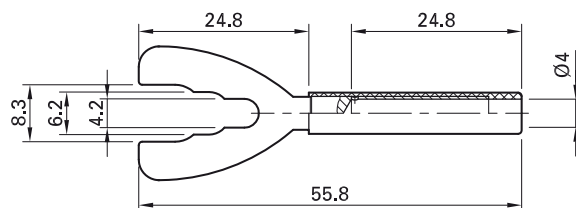
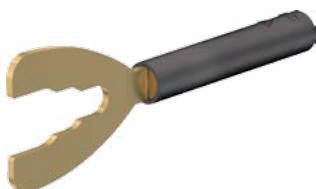


## Cable Lug Adapter B4-I/K

Made of brass for permanent installation, e.g. for connecting screw terminals. Ø 4 mm rigid socket in insulator accepting

spring-loaded Ø 4 mm plugs with rigid insulating sleeve.



| Order No. | Type   | Rated voltage/current |    | *Colors     |
|-----------|--------|-----------------------|----|-------------|
| 23.5065-* | B4-I/K | 1000 V, CAT II / 32 A | Au | 21 22 23 24 |



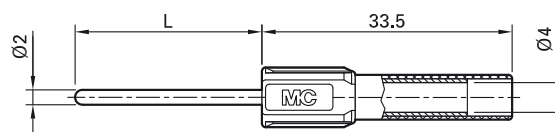
Rating sheet RZ010

[www.staubli.com/electrical](http://www.staubli.com/electrical)

## Round Brass Pin ZPS-20/...

Solid, especially suitable for the screw connection to electricity meter clips. Ø 4 mm rigid socket in insulator, accepting spring-loaded Ø 4 mm plugs with rigid

insulating sleeve. Available in different pin diameters D and lengths L.



| Order No. | Type      | Rated voltage/current | Length (L) |    | *Colors                 |
|-----------|-----------|-----------------------|------------|----|-------------------------|
| 66.9076-* | ZPS-20/25 | 600 V, CAT II / 19 A  | 25 mm      | Ni | 21 22 23 24 25<br>26 27 |
| 66.9082-* | ZPS-20/40 | 600 V, CAT II / 19 A  | 40 mm      | Ni | 21 22 23 24 25<br>26 27 |



Rating sheet RZ004

[www.staubli.com/electrical](http://www.staubli.com/electrical)