

LED Constant Current Drivers

350 mA / 8 W to 1050 mA / 20 W

Electrical characteristics

Secondary side switching of LED modules is not allowed.

Power factor: 0.6

Service life time: 50,000 hrs

Connection details

Mains voltage: 220-240 V ± 10%

Mains frequency: 0 Hz, 50-60 Hz

Screw terminals: 2.5 mm²

Quantity of screw terminals:

1x 2-poles primary

1x 2-poles secondary

With integrated cord grip (except 186180)

Safety features

Electronic short-circuit protection

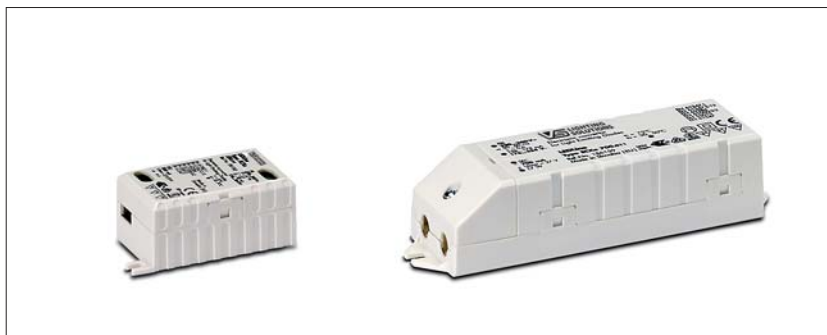
Overload protection

Protection against "no load" operation

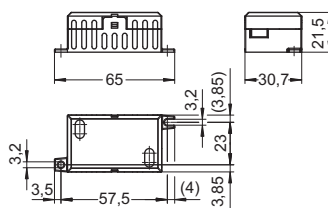
Degree of protection: IP20

Protection class II

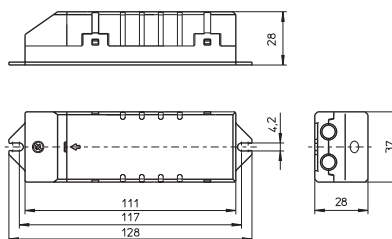
SELV equivalent



A



B



Max. output W	Type	Ref. No.	Mains voltage 0 Hz, 50-60 Hz V	Mains current mA	Current output DC mA	Voltage output DC V	Max. voltage without load DC V	Efficiency at full load % (230 V)	Ambient temperature t_a °C	Casing temperature t_c °C	Drawing	Weight g
Dimensions: 65 x 30.7 x 21.5 mm												
8	ECXe 350.018	186180	176-264 220-240	60-40 91-88	350 ± 5%	2-24	25	> 78	-20 to 50	80	A	33
Dimensions: 128 x 37 x 28 mm												
11	ECXe 350.009	186157	176-264 220-240	75-51 122-117	350 ± 5%	2-32	34	> 82	-20 to 50	70	B	71
16	ECXe 500.010	186158	176-264 220-240	106-72 160-155	500 ± 5%	2-32	34	> 82	-20 to 50	75	B	71
17	ECXe 700.011	186159	176-264 220-240	117-79 188-178	700 ± 5%	2-25	27	> 82	-20 to 50	75	B	71
20	ECXe 1050.012	186160	176-264 220-240	137-92 210-202	1050 ± 5%	2-19	21	> 80	-20 to 45	75	B	71