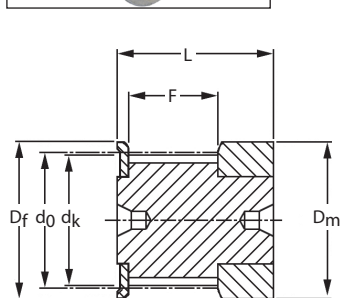


HTD 3M

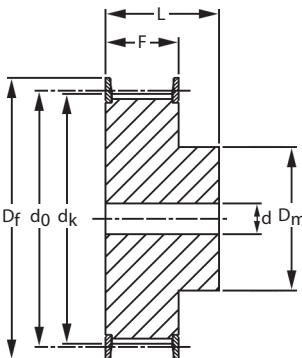
PULLEYS & BELTS

HTD Timing Pulleys

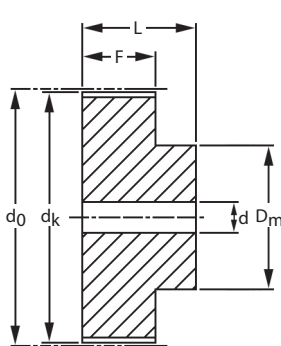
3mm Pitch - To Suit 9mm Wide Belts



Execution 0F



Execution 1F



Execution 8

Discounts: 6+ -7% 20+ -14% 40+ -20% 60+ -24% 100+ -27%

Part Number	Type	No. of Teeth z	PCD d ₀	Tip Dia. d _k	Flange Dia. D _f	Hub Dia. D _m	Face Width F	Overall Width L	Bore d	No. of Flanges	Price Each 1 - 5
P10-3M-09F	0F	10	9.55	8.79	13.0	13.0	10.2	17.5	*	2	£7.03
P12-3M-09F	0F	12	11.46	10.70	15.0	15.0	10.2	17.5	*	2	£7.03
P14-3M-09F	0F	14	13.37	12.61	16.0	16.0	10.2	17.5	*	2	£7.16
P15-3M-09F	0F	15	14.32	13.56	17.5	17.5	10.2	17.5	*	2	£7.16
P16-3M-09F	1F	16	15.28	14.52	17.5	10.0	12.8	20.6	4	2	£7.68
P18-3M-09F	1F	18	17.19	16.43	20.0	11.0	12.8	20.6	6	2	£7.80
P20-3M-09F	1F	20	19.10	18.34	23.0	13.0	12.8	20.6	6	2	£7.84
P21-3M-09F	1F	21	20.05	19.29	25.0	14.0	12.8	20.6	6	2	£8.07
P22-3M-09F	1F	22	21.01	20.25	25.0	14.0	12.8	20.6	6	2	£8.32
P24-3M-09F	1F	24	22.92	22.16	25.0	14.0	12.8	20.6	6	2	£8.84
P26-3M-09F	1F	26	24.83	24.07	28.0	16.0	12.8	20.6	6	2	£9.01
P28-3M-09F	1F	28	26.74	25.98	32.0	18.0	12.8	20.6	6	2	£9.16
P30-3M-09F	1F	30	28.65	27.89	32.0	20.0	12.8	20.6	6	2	£9.37
P32-3M-09F	1F	32	30.56	29.80	36.0	22.0	12.8	20.6	6	2	£9.93
P36-3M-09F	1F	36	34.38	33.62	39.0	26.0	13.4	22.2	6	2	£10.57
P40-3M-09F	1F	40	38.20	37.44	42.0	28.0	13.4	22.2	6	2	£11.61
P44-3M-09F	1F	44	42.02	41.26	48.0	33.0	13.4	22.2	6	2	£13.43
P48-3M-09	8	48	45.84	45.08	-	33.0	13.4	22.2	8	0	£14.51
P60-3M-09	8	60	57.30	56.54	-	33.0	13.4	22.2	8	0	£15.52
P72-3M-09	8	72	68.75	67.99	-	33.0	13.4	22.2	8	0	£17.77

Material

Execution 0F & 1F: Aluminium with Zinc plated Steel flanges.

Execution 8: Aluminium.

* Centre drilled or pilot bored

Other Info.

All dimensions subject to change.

If a dimension is critical to your application, please contact Sales for confirmation.



+44 (0)1246 455500



+44 (0)1246 455522

ondrives



sales@ondrives.com



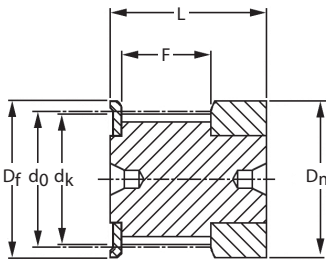
www.ondrives.com

PULLEYS & BELTS

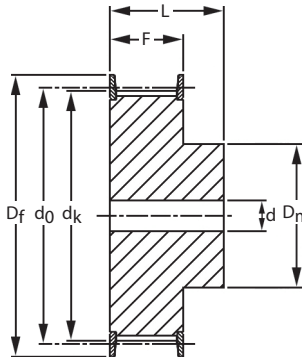
HTD 3M

HTD Timing Pulleys

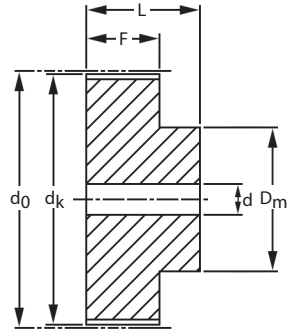
3mm Pitch - To Suit 15mm Wide Belts



Execution 0F



Execution 1F



Execution 8

Discounts: 6+ -7% 20+ -14% 40+ -20% 60+ -24% 100+ -27%

Part Number	Type	No. of Teeth z	PCD do	Tip Dia. dk	Flange Dia. Df	Hub Dia. Dm	Face Width F	Overall Width L	Bore d	No. of Flanges	Price Each 1 - 5
P10-3M-15F	0F	10	9.55	8.79	13.0	13.0	17.0	26	*	2	£7.56
P12-3M-15F	0F	12	11.46	10.70	15.0	15.0	17.0	26	*	2	£7.80
P14-3M-15F	0F	14	13.37	12.61	16.0	16.0	17.0	26	*	2	£8.08
P15-3M-15F	0F	15	14.32	13.56	17.5	17.5	17.0	26	*	2	£8.21
P16-3M-15F	1F	16	15.28	14.52	17.5	10.0	19.5	26	4	2	£8.32
P18-3M-15F	1F	18	17.19	16.43	20.0	11.0	19.5	26	6	2	£8.53
P20-3M-15F	1F	20	19.10	18.34	23.0	13.0	19.5	26	6	2	£8.53
P21-3M-15F	1F	21	20.05	19.29	25.0	14.0	19.5	26	6	2	£8.88
P22-3M-15F	1F	22	21.01	20.25	25.0	14.0	19.5	26	6	2	£9.01
P24-3M-15F	1F	24	22.92	22.16	25.0	14.0	19.5	26	6	2	£9.37
P26-3M-15F	1F	26	24.83	24.07	28.0	16.0	19.5	26	6	2	£10.06
P28-3M-15F	1F	28	26.74	25.98	32.0	18.0	19.5	26	6	2	£10.57
P30-3M-15F	1F	30	28.65	27.89	32.0	20.0	19.5	26	6	2	£10.85
P32-3M-15F	1F	32	30.56	29.80	36.0	22.0	19.5	26	6	2	£11.61
P36-3M-15F	1F	36	34.38	33.62	39.0	26.0	20.0	30	6	2	£12.90
P40-3M-15F	1F	40	38.20	37.44	42.0	28.0	20.0	30	6	2	£14.15
P44-3M-15F	1F	44	42.02	41.26	48.0	33.0	20.0	30	6	2	£16.16
P48-3M-15	8	48	45.84	45.08	-	33.0	20.0	30	8	0	£17.77
P60-3M-15	8	60	57.30	56.54	-	33.0	20.0	30	8	0	£21.31
P72-3M-15	8	72	68.75	67.99	-	33.0	20.0	30	8	0	£23.24

Material

Execution 0F & 1F: Aluminium with Zinc plated Steel flanges.

Execution 8: Aluminium.

* Centre drilled or pilot bored

Other Info.

All dimensions subject to change.

If a dimension is critical to your application, please contact Sales for confirmation.



+44 (0)1246 455500



+44 (0)1246 455522

ondrives



sales@ondrives.com



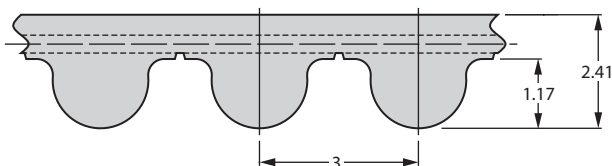
www.ondrives.com

HTD 3M

PULLEYS & BELTS

HTD Rubber Timing Pulley Belts

3mm Pitch - 9mm Wide



Discounts: 6+ -7% 20+ -14% 40+ -20% 60+ -24% 100+ -27%

Part Number	Belt Length	No. of Teeth	Price Each 1 - 5
HTD-105-3M/9	105	35	£4.22
HTD-111-3M/9	111	37	£4.22
HTD-129-3M/9	129	43	£4.22
HTD-141-3M/9	141	47	£4.22
HTD-144-3M/9	144	48	£4.22
HTD-150-3M/9	150	50	£4.22
HTD-159-3M/9	159	53	£4.22
HTD-168-3M/9	168	56	£4.22
HTD-174-3M/9	174	58	£4.38
HTD-177-3M/9	177	59	£4.38
HTD-180-3M/9	180	60	£4.38
HTD-186-3M/9	186	62	£4.38
HTD-195-3M/9	195	65	£4.38
HTD-201-3M/9	201	67	£4.47
HTD-204-3M/9	204	68	£4.47
HTD-210-3M/9	210	70	£4.47
HTD-213-3M/9	213	71	£4.47
HTD-216-3M/9	216	72	£4.47
HTD-225-3M/9	225	75	£4.47
HTD-240-3M/9	240	80	£4.58
HTD-243-3M/9	243	81	£4.62
HTD-252-3M/9	252	84	£4.62
HTD-255-3M/9	255	85	£4.62
HTD-264-3M/9	264	88	£4.62
HTD-267-3M/9	267	89	£4.62
HTD-276-3M/9	276	92	£4.62
HTD-285-3M/9	285	95	£4.62
HTD-288-3M/9	288	96	£4.75
HTD-291-3M/9	291	97	£4.75
HTD-300-3M/9	300	100	£4.75
HTD-312-3M/9	312	104	£4.99
HTD-318-3M/9	318	106	£4.99
HTD-330-3M/9	330	110	£4.99
HTD-336-3M/9	336	112	£4.99
HTD-339-3M/9	339	113	£4.99
HTD-345-3M/9	345	115	£5.00
HTD-357-3M/9	357	119	£4.99

Part Number	Belt Length	No. of Teeth	Price Each 1 - 5
HTD-363-3M/9	363	121	£5.11
HTD-384-3M/9	384	128	£5.11
HTD-390-3M/9	390	130	£5.22
HTD-405-3M/9	405	135	£5.21
HTD-420-3M/9	420	140	£5.22
HTD-447-3M/9	447	149	£5.35
HTD-474-3M/9	474	158	£5.46
HTD-480-3M/9	480	160	£5.46
HTD-486-3M/9	486	162	£5.63
HTD-489-3M/9	489	163	£5.63
HTD-501-3M/9	501	167	£5.63
HTD-510-3M/9	510	170	£5.63
HTD-513-3M/9	513	171	£5.63
HTD-522-3M/9	522	174	£5.70
HTD-531-3M/9	531	177	£5.70
HTD-537-3M/9	537	179	£5.70
HTD-564-3M/9	564	188	£5.87
HTD-570-3M/9	570	190	£5.95
HTD-597-3M/9	597	199	£6.08
HTD-600-3M/9	600	200	£6.08
HTD-606-3M/9	606	202	£6.08
HTD-633-3M/9	633	211	£6.08
HTD-648-3M/9	648	216	£6.23
HTD-669-3M/9	669	223	£6.36
HTD-711-3M/9	711	237	£6.47
HTD-738-3M/9	738	246	£6.47
HTD-756-3M/9	756	252	£6.96
HTD-882-3M/9	882	294	£7.35
HTD-945-3M/9	945	315	£7.48
HTD-1062-3M/9	1,062	354	£7.59
HTD-1125-3M/9	1,125	375	£7.84
HTD-1245-3M/9	1,245	415	£8.32
HTD-1263-3M/9	1,263	421	£8.33
HTD-1530-3M/9	1,530	510	£9.44
HTD-1569-3M/9	1,569	523	£9.65
HTD-1863-3M/9	1,863	621	£10.49

Material

Rubber back/teeth, glass fibre reinforced, nylon fabric tooth facing to DIN / ISO 5296.

Options

9 & 15mm wide belts supplied as standard. Other belt widths and lengths available. P.O.A.

+44 (0)1246 455500
+44 (0)1246 455522

ondrives

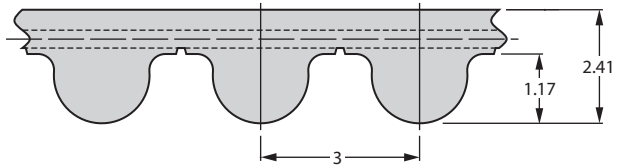
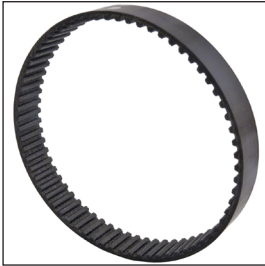
sales@ondrives.com
www.ondrives.com

PULLEYS & BELTS

HTD Rubber Timing Pulley Belts

3mm Pitch - 15mm Wide

HTD 3M



Discounts: 6+ -7% 20+ -14% 40+ -20% 60+ -24% 100+ -27%

Part Number	Belt Length	No. of Teeth	Price Each 1 - 5
HTD-105-3M/15	105	35	£6.71
HTD-111-3M/15	111	37	£6.71
HTD-129-3M/15	129	43	£6.71
HTD-141-3M/15	141	47	£6.71
HTD-144-3M/15	144	48	£6.71
HTD-150-3M/15	150	50	£6.71
HTD-159-3M/15	159	53	£6.88
HTD-168-3M/15	168	56	£6.88
HTD-174-3M/15	174	58	£6.83
HTD-177-3M/15	177	59	£6.96
HTD-180-3M/15	180	60	£6.96
HTD-186-3M/15	186	62	£6.96
HTD-195-3M/15	195	65	£6.96
HTD-201-3M/15	201	67	£7.12
HTD-204-3M/15	204	68	£7.12
HTD-210-3M/15	210	70	£7.12
HTD-213-3M/15	213	71	£7.12
HTD-216-3M/15	216	72	£7.56
HTD-225-3M/15	225	75	£7.24
HTD-240-3M/15	240	80	£7.35
HTD-243-3M/15	243	81	£7.35
HTD-252-3M/15	252	84	£7.35
HTD-255-3M/15	255	85	£7.35
HTD-264-3M/15	264	88	£7.48
HTD-267-3M/15	267	89	£7.48
HTD-276-3M/15	276	92	£7.48
HTD-285-3M/15	285	95	£7.48
HTD-288-3M/15	288	96	£7.59
HTD-291-3M/15	291	97	£7.59
HTD-300-3M/15	300	100	£7.59
HTD-312-3M/15	312	104	£7.59
HTD-318-3M/15	318	106	£7.84
HTD-330-3M/15	330	110	£7.84
HTD-336-3M/15	336	112	£7.84
HTD-339-3M/15	339	113	£8.00
HTD-345-3M/15	345	115	£8.00
HTD-357-3M/15	357	119	£8.00

Part Number	Belt Length	No. of Teeth	Price Each 1 - 5
HTD-363-3M/15	363	121	£8.00
HTD-384-3M/15	384	128	£8.00
HTD-390-3M/15	390	130	£8.32
HTD-405-3M/15	405	135	£8.33
HTD-420-3M/15	420	140	£8.32
HTD-447-3M/15	447	149	£8.60
HTD-474-3M/15	474	158	£8.84
HTD-480-3M/15	480	160	£8.84
HTD-486-3M/15	486	162	£8.84
HTD-489-3M/15	489	163	£8.84
HTD-501-3M/15	501	167	£8.96
HTD-510-3M/15	510	170	£8.96
HTD-513-3M/15	513	171	£8.96
HTD-522-3M/15	522	174	£9.09
HTD-531-3M/15	531	177	£9.09
HTD-537-3M/15	537	179	£9.09
HTD-564-3M/15	564	188	£9.33
HTD-570-3M/15	570	190	£9.33
HTD-597-3M/15	597	199	£9.73
HTD-600-3M/15	600	200	£9.73
HTD-606-3M/15	606	202	£9.73
HTD-633-3M/15	633	211	£9.85
HTD-648-3M/15	648	216	£10.10
HTD-669-3M/15	669	223	£10.10
HTD-711-3M/15	711	237	£10.34
HTD-738-3M/15	738	246	£10.34
HTD-756-3M/15	756	252	£11.09
HTD-882-3M/15	882	294	£11.82
HTD-945-3M/15	945	315	£12.10
HTD-1062-3M/15	1,062	354	£12.10
HTD-1125-3M/15	1,125	375	£12.58
HTD-1245-3M/15	1,245	415	£13.18
HTD-1263-3M/15	1,263	421	£13.18
HTD-1530-3M/15	1,530	510	£15.20
HTD-1569-3M/15	1,569	523	£15.48
HTD-1863-3M/15	1,863	621	£16.81

Material

Rubber back/teeth, glass fibre reinforced, nylon fabric tooth facing to DIN / ISO 5296.

Options

9 & 15mm wide belts supplied as standard.
Other belt widths and lengths available. P.O.A.



+44 (0)1246 455500



+44 (0)1246 455522

ondrives



sales@ondrives.com



www.ondrives.com

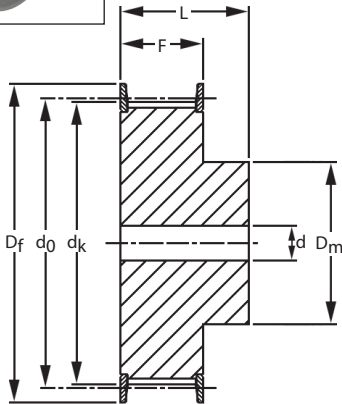
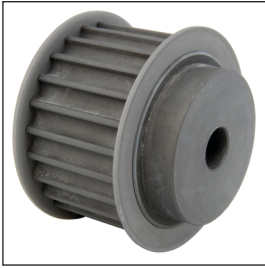
Product information updated April 2016 and subject to change. Please contact Sales for the latest prices and availability.

PULLEYS & BELTS

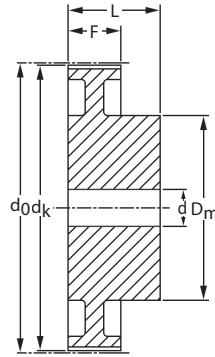
HTD 5M

HTD Timing Pulleys

5mm Pitch - To Suit 9mm Wide Belts



Execution 1F



Execution 3

Discounts: 6+ -7% 20+ -14% 40+ -20% 60+ -24% 100+ -27%

Part Number	Type	No. of Teeth z	PCD d ₀	Tip Dia. d _k	Flange Dia. D _f	Hub Dia. D _m	Face Width F	Overall Width L	Bore d	No. of Flanges	Price Each 1 - 5
P12-5M-09F	1F	12	19.10	17.96	23	13.0	14.5	20.0	4	2	£6.23
P14-5M-09F	1F	14	22.28	21.14	25	13.0	14.5	20.0	6	2	£6.71
P15-5M-09F	1F	15	23.87	22.73	28	16.0	14.5	20.0	6	2	£7.03
P16-5M-09F	1F	16	25.46	24.32	28	16.5	14.5	20.0	6	2	£7.44
P18-5M-09F	1F	18	28.65	27.51	32	20.0	14.5	20.0	6	2	£8.21
P20-5M-09F	1F	20	31.83	30.69	36	23.0	14.5	22.5	6	2	£8.73
P21-5M-09F	1F	21	33.42	32.28	38	24.0	14.5	22.5	6	2	£9.05
P22-5M-09F	1F	22	35.01	33.87	39	25.5	14.5	22.5	6	2	£9.44
P24-5M-09F	1F	24	38.20	37.06	42	27.0	14.5	22.5	6	2	£10.01
P26-5M-09F	1F	26	41.38	40.24	44	30.0	14.5	22.5	6	2	£10.45
P28-5M-09F	1F	28	44.56	43.42	48	30.5	14.5	22.5	6	2	£10.90
P30-5M-09F	1F	30	47.75	46.60	51	35.0	14.5	22.5	6	2	£11.30
P32-5M-09F	1F	32	50.93	49.79	54	38.0	14.5	22.5	8	2	£12.79
P36-5M-09F	1F	36	57.30	56.16	60	38.0	14.5	22.5	8	2	£13.31
P40-5M-09F	1F	40	63.66	62.52	71	38.0	14.5	22.5	8	2	£13.83
P44-5M-09	3	44	70.03	68.89	-	38.0	14.5	25.5	8	0	£19.82
P48-5M-09	3	48	76.39	75.25	-	45.0	14.5	25.5	8	0	£21.88
P60-5M-09	3	60	95.49	94.35	-	45.0	14.5	25.5	8	0	£29.23
P72-5M-09	3	72	114.59	113.45	-	45.0	14.5	25.5	8	0	£35.74

Material

Execution 1F: Steel with Zinc plated Steel flanges.

Execution 3: Aluminium.

Other Info.

All dimensions subject to change.

If a dimension is critical to your application, please contact Sales for confirmation.



+44 (0)1246 455500



+44 (0)1246 455522

ondrives



sales@ondrives.com



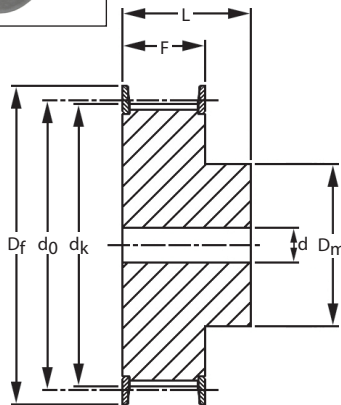
www.ondrives.com

PULLEYS & BELTS

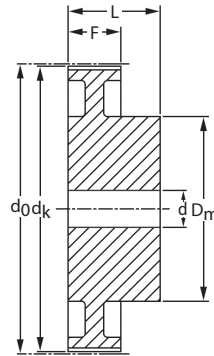
HTD 5M

HTD Timing Pulleys

5mm Pitch - To Suit 15mm Wide Belts



Execution 1F



Execution 3

Discounts: 6+ -7% 20+ -14% 40+ -20% 60+ -24% 100+ -27%

Part Number	Type	No. of Teeth z	PCD d ₀	Tip Dia. d _k	Flange Dia. D _f	Hub Dia. D _m	Face Width F	Overall Width L	Bore d	No. of Flanges	Price Each 1 - 5
P12-5M-15F	1F	12	19.10	17.96	23	13.0	20.5	26	*	2	£7.27
P14-5M-15F	1F	14	22.28	21.14	25	13.0	20.5	26	6	2	£7.72
P15-5M-15F	1F	15	23.87	22.73	28	16.0	20.5	26	6	2	£8.21
P16-5M-15F	1F	16	25.46	24.32	28	16.5	20.5	26	6	2	£8.36
P18-5M-15F	1F	18	28.65	27.51	32	20.0	20.5	26	6	2	£9.05
P20-5M-15F	1F	20	31.83	30.69	36	23.0	20.5	26	6	2	£9.57
P21-5M-15F	1F	21	33.42	32.28	38	24.0	20.5	26	6	2	£10.01
P22-5M-15F	1F	22	35.01	33.87	39	25.5	20.5	26	6	2	£10.45
P24-5M-15F	1F	24	38.20	37.06	42	27.0	20.5	28	6	2	£10.45
P26-5M-15F	1F	26	41.38	40.24	44	30.0	20.5	28	6	2	£11.22
P28-5M-15F	1F	28	44.56	43.42	48	30.5	20.5	28	6	2	£12.79
P30-5M-15F	1F	30	47.75	46.60	51	35.0	20.5	28	6	2	£13.83
P32-5M-15F	1F	32	50.93	49.79	54	38.0	20.5	28	8	2	£14.55
P36-5M-15F	1F	36	57.30	56.16	60	38.0	20.5	28	8	2	£15.28
P40-5M-15F	1F	40	63.66	62.52	71	38.0	20.5	28	8	2	£16.53
P44-5M-15	3	44	70.03	68.89	-	38.0	20.5	30	8	0	£23.64
P48-5M-15	3	48	76.39	75.25	-	38.0	20.5	30	8	0	£26.09
P60-5M-15	3	60	95.49	94.35	-	50.0	20.5	30	8	0	£35.38
P72-5M-15	3	72	114.59	113.45	-	50.0	20.5	30	8	0	£43.70

Material

Execution 1F: Steel with Zinc plated Steel flanges.

Execution 3: Aluminium.

* Centre drilled or pilot bored.

Other Info.

All dimensions subject to change.

If a dimension is critical to your application, please contact Sales for confirmation.



+44 (0)1246 455500



+44 (0)1246 455522

ondrives



sales@ondrives.com



www.ondrives.com

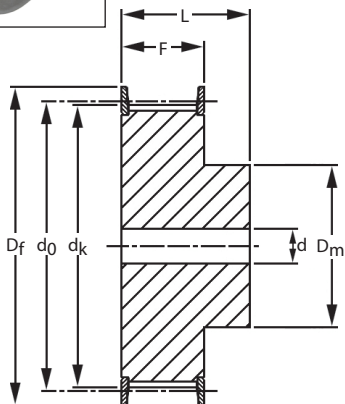
Product information updated April 2016 and subject to change. Please contact Sales for the latest prices and availability.

HTD 5M

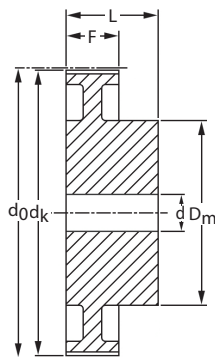
PULLEYS & BELTS

HTD Timing Pulleys

5mm Pitch - To Suit 25mm Wide Belts



Execution 1F



Execution 3

Discounts: 6+ -7% 20+ -14% 40+ -20% 60+ -24% 100+ -27%

Part Number	Type	No. of Teeth z	PCD d ₀	Tip Dia. d _k	Flange Dia. D _f	Hub Dia. D _m	Face Width F	Overall Width L	Bore d	No. of Flanges	Price Each 1 - 5
P12-5M-25F	1F	12	19.10	17.96	23	13.0	30.5	36.0	*	2	£8.88
P14-5M-25F	1F	14	22.28	21.14	25	13.0	30.5	36.0	6	2	£9.57
P15-5M-25F	1F	15	23.87	22.73	28	16.0	30.5	36.0	6	2	£10.01
P16-5M-25F	1F	16	25.46	24.32	28	16.5	30.5	36.0	6	2	£10.45
P18-5M-25F	1F	18	28.65	27.51	32	20.0	30.5	36.0	6	2	£10.90
P20-5M-25F	1F	20	31.83	30.69	36	23.0	30.5	36.0	6	2	£11.82
P21-5M-25F	1F	21	33.42	32.28	38	24.0	30.5	38.0	6	2	£12.23
P22-5M-25F	1F	22	35.01	33.87	39	25.5	30.5	38.0	6	2	£13.07
P24-5M-25F	1F	24	38.20	37.06	42	27.0	30.5	38.0	6	2	£14.36
P26-5M-25F	1F	26	41.38	40.24	44	30.0	30.5	38.0	6	2	£15.16
P28-5M-25F	1F	28	44.56	43.42	48	30.5	30.5	38.0	6	2	£16.40
P30-5M-25F	1F	30	47.75	46.60	51	35.0	30.5	38.0	6	2	£17.80
P32-5M-25F	1F	32	50.93	49.79	54	38.0	30.5	38.0	8	2	£18.90
P36-5M-25F	1F	36	57.30	56.16	60	38.0	30.5	38.0	8	2	£19.82
P40-5M-25F	1F	40	63.66	62.52	71	38.0	30.5	38.0	8	2	£22.79
P44-5M-25	3	44	70.03	68.89	-	38.0	30.5	40.0	8	0	£31.72
P48-5M-25	3	48	76.39	75.25	-	38.0	30.5	40.0	8	0	£35.21
P60-5M-25	3	60	95.49	94.35	-	50.0	30.5	40.0	8	0	£47.96
P72-5M-25	3	72	114.59	113.45	-	50.0	30.5	40.0	8	0	£60.23

Material

Execution 1F: Steel with Zinc plated Steel flanges.

Execution 3: Aluminium.

* Centre drilled or pilot bored.

Other Info.

All dimensions subject to change.

If a dimension is critical to your application, please contact Sales for confirmation.



+44 (0)1246 455500



+44 (0)1246 455522

ondrives



sales@ondrives.com



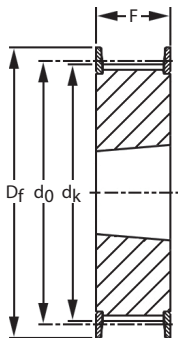
www.ondrives.com

PULLEYS & BELTS

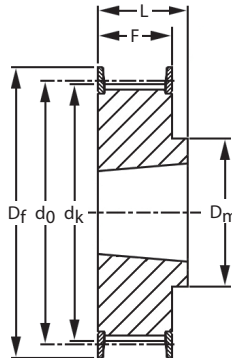
HTD Timing Pulleys with Taper Bore

5mm Pitch - To Suit 15mm Wide Belts

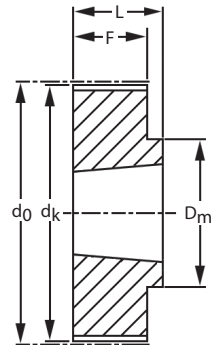
HTD 5M



Execution 1F



Execution 5F



Execution 5

Discounts: 6+ -7% 20+ -14% 40+ -20% 60+ -24% 100+ -27%

Part Number	Type	No. of Teeth z	To Suit Bush	PCD d ₀	Tip Dia. d _k	Flange Dia. D _f	Hub Dia. D _m	Face Width F	Overall Width L	No. of Flanges	Price Each 1-5
TL34-5M-15F	1F	34	1008	54.11	52.97	57	-	22	-	2	£15.03
TL36-5M-15F	1F	36	1108	57.30	56.15	60	-	22	-	2	£15.97
TL38-5M-15F	1F	38	1108	60.48	59.34	66	-	22	-	2	£16.89
TL40-5M-15F	1F	40	1108	63.66	62.52	70	-	22	-	2	£17.29
TL44-5M-15F	1F	44	1108	70.03	68.89	75	-	22	-	2	£19.05
TL48-5M-15F	5F	48	1210	76.39	75.25	83	59	22	25	2	£21.88
TL56-5M-15F	5F	56	1210	89.13	87.39	93	70	22	25	2	£25.21
TL64-5M-15F	5F	64	1210	101.86	100.72	106	80	22	25	2	£30.55
TL72-5M-15	5	72	1610	114.59	113.45	-	92	22	25	0	£32.57

Material

Execution 1F & 5F: Steel with Zinc plated Steel flanges.
Execution 5: Steel.

Other Info.

All dimensions subject to change.
If a dimension is critical to your application, please contact Sales for confirmation.



+44 (0)1246 455500



+44 (0)1246 455522

ondrives



sales@ondrives.com

www.ondrives.com

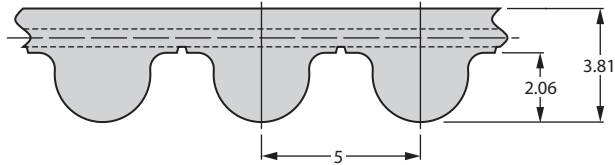
Product information updated April 2016 and subject to change. Please contact Sales for the latest prices and availability.

HTD 5M

PULLEYS & BELTS

HTD Rubber Timing Pulley Belts

5mm Pitch - 9mm Wide



Discounts: 6+ -7% 20+ -14% 40+ -20% 60+ -24% 100+ -27%

Part Number	Belt Length	No. of Teeth	Price Each 1 - 5
HTD-225-5M/9	225	45	£4.51
HTD-255-5M/9	255	51	£4.94
HTD-265-5M/9	265	53	£5.03
HTD-300-5M/9	300	60	£5.27
HTD-330-5M/9	330	66	£5.35
HTD-350-5M/9	350	70	£5.39
HTD-375-5M/9	375	75	£5.51
HTD-400-5M/9	400	80	£5.74
HTD-425-5M/9	425	85	£5.87
HTD-450-5M/9	450	90	£5.99
HTD-475-5M/9	475	95	£6.11
HTD-500-5M/9	500	100	£6.23
HTD-525-5M/9	525	105	£6.36
HTD-535-5M/9	535	107	£6.60
HTD-550-5M/9	550	110	£6.60
HTD-600-5M/9	600	120	£6.83

Part Number	Belt Length	No. of Teeth	Price Each 1 - 5
HTD-635-5M/9	635	127	£7.07
HTD-665-5M/9	665	133	£7.24
HTD-670-5M/9	670	134	£7.31
HTD-700-5M/9	700	140	£7.52
HTD-750-5M/9	750	150	£7.80
HTD-755-5M/9	755	151	£7.80
HTD-800-5M/9	800	160	£8.00
HTD-900-5M/9	900	180	£8.64
HTD-950-5M/9	950	190	£8.96
HTD-1050-5M/9	1,050	210	£9.69
HTD-1125-5M/9	1,125	225	£10.17
HTD-1270-5M/9	1,270	254	£10.90
HTD-1350-5M/9	1,350	270	£11.30
HTD-1420-5M/9	1,420	284	£11.74
HTD-1500-5M/9	1,500	300	£12.23

Material

Rubber back/teeth, glass fibre reinforced, nylon fabric tooth facing to DIN / ISO 5296.

Options

9, 15 & 25mm wide belts supplied as standard.
6mm and other belt widths also available. P.O.A.
Other belt lengths also available. P.O.A.



+44 (0)1246 455500



+44 (0)1246 455522

ondrives



sales@ondrives.com



www.ondrives.com

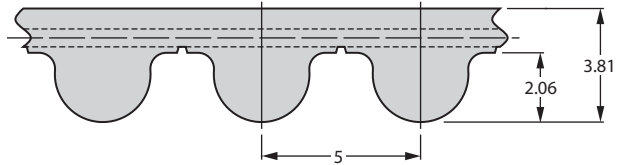
Product information updated April 2016 and subject to change. Please contact Sales for the latest prices and availability.

PULLEYS & BELTS

HTD Rubber Timing Pulley Belts

5mm Pitch - 15mm Wide

HTD 5M



Discounts: 6+ -7% 20+ -14% 40+ -20% 60+ -24% 100+ -27%

Part Number	Belt Length	No. of Teeth	Price Each 1 - 5
HTD-225-5M/15	225	45	£7.16
HTD-255-5M/15	255	51	£7.84
HTD-265-5M/15	265	53	£7.93
HTD-300-5M/15	300	60	£8.00
HTD-330-5M/15	330	66	£8.44
HTD-350-5M/15	350	70	£8.64
HTD-375-5M/15	375	75	£8.84
HTD-400-5M/15	400	80	£8.96
HTD-425-5M/15	425	85	£9.33
HTD-450-5M/15	450	90	£9.57
HTD-475-5M/15	475	95	£9.69
HTD-500-5M/15	500	100	£10.06
HTD-525-5M/15	525	105	£10.17
HTD-535-5M/15	535	107	£10.29
HTD-550-5M/15	550	110	£10.41
HTD-600-5M/15	600	120	£10.90

Part Number	Belt Length	No. of Teeth	Price Each 1 - 5
HTD-635-5M/15	635	127	£11.14
HTD-665-5M/15	665	133	£11.58
HTD-670-5M/15	670	134	£11.61
HTD-700-5M/15	700	140	£11.98
HTD-750-5M/15	750	150	£12.34
HTD-755-5M/15	755	151	£12.34
HTD-800-5M/15	800	160	£12.83
HTD-900-5M/15	900	180	£13.78
HTD-950-5M/15	950	190	£14.27
HTD-1050-5M/15	1,050	210	£15.20
HTD-1125-5M/15	1,125	225	£15.92
HTD-1270-5M/15	1,270	254	£17.13
HTD-1350-5M/15	1,350	270	£17.93
HTD-1420-5M/15	1,420	284	£18.66
HTD-1500-5M/15	1,500	300	£19.50

Material

Rubber back/teeth, glass fibre reinforced, nylon fabric tooth facing to DIN / ISO 5296.

Options

9, 15 & 25mm wide belts supplied as standard.
6mm and other belt widths also available. P.O.A.
Other belt lengths also available. P.O.A.



+44 (0)1246 455500



+44 (0)1246 455522

ondrives



sales@ondrives.com



www.ondrives.com

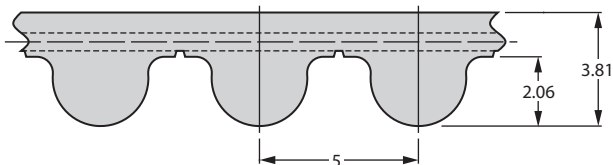
Product information updated April 2016 and subject to change. Please contact Sales for the latest prices and availability.

HTD 5M

PULLEYS & BELTS

HTD Rubber Timing Pulley Belts

5mm Pitch - 25mm Wide

**Discounts: 6+ -7% 20+ -14% 40+ -20% 60+ -24% 100+ -27%**

Part Number	Belt Length	No. of Teeth	Price Each 1 - 5
HTD-225-5M/25	225	45	£11.46
HTD-255-5M/25	255	51	£13.02
HTD-265-5M/25	265	53	£13.55
HTD-300-5M/25	300	60	£13.82
HTD-330-5M/25	330	66	£14.29
HTD-350-5M/25	350	70	£14.50
HTD-375-5M/25	375	75	£14.92
HTD-400-5M/25	400	80	£15.30
HTD-425-5M/25	425	85	£15.84
HTD-450-5M/25	450	90	£16.12
HTD-475-5M/25	475	95	£16.37
HTD-500-5M/25	500	100	£16.80
HTD-525-5M/25	525	105	£17.06
HTD-535-5M/25	535	107	£17.34
HTD-550-5M/25	550	110	£17.69
HTD-600-5M/25	600	120	£18.40

Part Number	Belt Length	No. of Teeth	Price Each 1 - 5
HTD-635-5M/25	635	127	£19.05
HTD-665-5M/25	665	133	£19.40
HTD-670-5M/25	670	134	£19.60
HTD-700-5M/25	700	140	£20.27
HTD-750-5M/25	750	150	£20.83
HTD-755-5M/25	755	151	£20.96
HTD-800-5M/25	800	160	£21.61
HTD-900-5M/25	900	180	£23.23
HTD-950-5M/25	950	190	£24.16
HTD-1050-5M/25	1,050	210	£25.83
HTD-1125-5M/25	1,125	225	£27.27
HTD-1270-5M/25	1,270	254	£29.28
HTD-1350-5M/25	1,350	270	£30.77
HTD-1420-5M/25	1,420	284	£31.70
HTD-1500-5M/25	1,500	300	£33.17

Material

Rubber back/teeth, glass fibre reinforced, nylon fabric tooth facing to DIN / ISO 5296.

Options

9, 15 & 25mm wide belts supplied as standard. 6mm and other belt widths also available. P.O.A. Other belt lengths also available. P.O.A.



+44 (0)1246 455500



+44 (0)1246 455522



sales@ondrives.com



www.ondrives.com

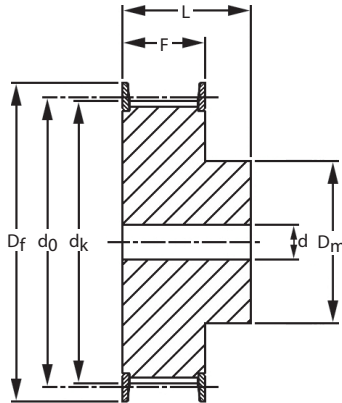
Product information updated April 2016 and subject to change. Please contact Sales for the latest prices and availability.

PULLEYS & BELTS

HTD 8M

HTD Timing Pulleys

8mm Pitch - To Suit 20mm Wide Belts



Execution 1F

Discounts: 6+ -7% 20+ -14% 40+ -20% 60+ -24% 100+ -27%

Part Number	Type	No. of Teeth z	PCD d_0	Tip Dia. d_k	Flange Dia. D_f	Hub Dia. D_m	Face Width F	Overall Width L	Bore d	No. of Flanges	Price Each 1 - 5
P22-8M-20F	1F	22	56.02	54.65	60.0	43	28	38	12	2	£14.83
P24-8M-20F	1F	24	61.12	59.75	66.0	45	28	38	12	2	£16.53
P26-8M-20F	1F	26	66.21	64.85	70.0	48	28	38	12	2	£17.52
P28-8M-20F	1F	28	71.30	70.08	75.0	50	28	38	15	2	£18.90
P30-8M-20F	1F	30	76.39	75.13	82.5	55	28	38	15	2	£21.02
P32-8M-20F	1F	32	81.49	80.16	87.0	60	28	38	15	2	£22.59
P34-8M-20F	1F	34	86.58	85.22	91.0	66	28	38	15	2	£24.08
P36-8M-20F	1F	36	91.67	90.30	97.0	70	28	38	15	2	£32.24
P38-8M-20F	1F	38	96.77	95.39	102.0	75	28	38	15	2	£33.94
P40-8M-20F	1F	40	101.86	100.49	106.0	75	28	38	15	2	£29.71
P44-8M-20F	1F	44	112.05	110.67	120.0	75	28	38	15	2	£41.70
P48-8M-20F	1F	48	122.23	120.86	128.0	75	28	38	15	2	£38.63

Material

Steel with Zinc plated Steel flanges.

Options

Other sizes available. P.O.A.

Other Info.

All dimensions subject to change.

If a dimension is critical to your application, please contact Sales for confirmation.



+44 (0)1246 455500



+44 (0)1246 455522

ondrives



sales@ondrives.com



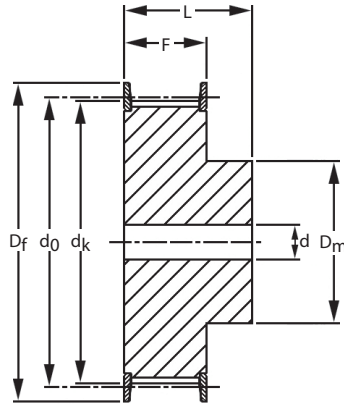
www.ondrives.com

HTD 8M

PULLEYS & BELTS

HTD Timing Pulleys

8mm Pitch - To Suit 30mm Wide Belts

**Execution 1F**

Discounts: 6+ -7%	20+ -14%	40+ -20%	60+ -24%	100+ -27%
--------------------------	-----------------	-----------------	-----------------	------------------

Part Number	Type	No. of Teeth z	PCD d ₀	Tip Dia. d _k	Flange Dia. D _f	Hub Dia. D _m	Face Width F	Overall Width L	Bore d	No. of Flanges	Price Each 1 - 5
P22-8M-30F	1F	22	56.02	54.65	60.0	43	38	48	12	2	£16.68
P24-8M-30F	1F	24	61.12	59.75	66.0	45	38	48	12	2	£18.21
P26-8M-30F	1F	26	66.21	64.85	70.0	48	38	48	12	2	£19.37
P28-8M-30F	1F	28	71.30	70.08	75.0	50	38	48	15	2	£21.02
P30-8M-30F	1F	30	76.39	75.13	82.5	55	38	48	15	2	£23.48
P32-8M-30F	1F	32	81.49	80.16	87.0	60	38	48	15	2	£25.00
P34-8M-30F	1F	34	86.58	85.22	91.0	66	38	48	15	2	£27.30
P36-8M-30F	1F	36	91.67	90.30	97.0	70	38	48	15	2	£36.07
P38-8M-30F	1F	38	96.77	95.39	102.0	75	38	48	15	2	£33.94
P40-8M-30F	1F	40	101.86	100.49	106.0	75	38	48	15	2	£34.89
P44-8M-30F	1F	44	112.05	110.67	120.0	75	38	48	15	2	£47.61
P48-8M-30F	1F	48	122.23	120.86	128.0	75	38	48	15	2	£44.91

Material

Steel with Zinc plated Steel flanges.

Options

Other sizes available. P.O.A.

Other Info.

All dimensions subject to change.

If a dimension is critical to your application, please contact Sales for confirmation.

**+44 (0)1246 455500****+44 (0)1246 455522****ondrives****sales@ondrives.com****www.ondrives.com**

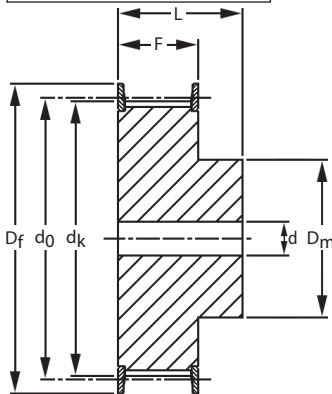
Product information updated April 2016 and subject to change. Please contact Sales for the latest prices and availability.

PULLEYS & BELTS

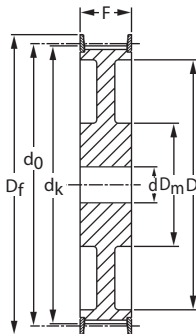
HTD 8M

HTD Timing Pulleys

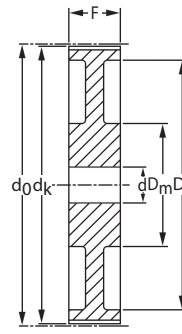
8mm Pitch - To Suit 50mm Wide Belts



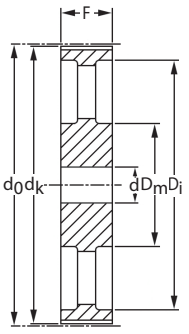
Execution 1F



Execution 6F



Execution 7



Execution 5

Discounts: 6+ -7% 20+ -14% 40+ -20% 60+ -24% 100+ -27%

Part Number	Type	No. of Teeth z	PCD do	Tip Dia. dk	Flange Dia. Df	Hub Dia. Dm	Face Width F	Overall Width L	Bore d	No. of Flanges	Price Each 1 - 5
P22-8M-50F	1F	22	56.02	54.65	60.0	43	60	70	*	2	£21.59
P24-8M-50F	1F	24	61.12	59.75	66.0	45	60	70	*	2	£23.60
P26-8M-50F	1F	26	66.21	64.85	70.0	48	60	70	*	2	£25.65
P28-8M-50F	1F	28	71.30	70.08	75.0	50	60	70	*	2	£27.82
P30-8M-50F	1F	30	76.39	75.13	82.5	55	60	70	*	2	£30.55
P32-8M-50F	1F	32	81.49	80.16	87.0	60	60	70	*	2	£33.04
P34-8M-50F	1F	34	86.58	85.22	91.0	66	60	70	*	2	£35.62
P36-8M-50F	1F	36	91.67	90.30	97.0	70	60	70	*	2	£47.27
P38-8M-50F	1F	38	96.77	95.39	102.0	75	60	70	*	2	£48.49
P40-8M-50F	1F	40	101.86	100.49	106.0	75	60	70	*	2	£46.24
P44-8M-50F	1F	44	112.05	110.67	120.0	75	60	70	*	2	£59.50
P48-8M-50F	1F	48	122.23	120.86	128.0	80	60	70	*	2	£59.91
P56-8M-50F	6F	56	142.60	141.23	150.0	90	60	-	18	2	£75.10
P64-8M-50F	6F	64	162.97	161.60	168.0	100	60	-	18	2	£93.47
P72-8M-50F	6F	72	183.35	181.97	132.0	100	60	-	18	2	£112.73
P80-8M-50	7	80	203.72	202.35	-	110	60	-	18	0	£118.76
P90-8M-50	7	90	229.18	227.81	-	110	60	-	18	0	£133.12
P112-8M-50	5	112	285.21	283.83	-	110	60	-	18	0	£170.10
P144-8M-50	5	144	366.69	365.32	-	110	60	-	20	0	£211.91
P168-8M-50	5	168	427.81	426.44	-	120	60	-	20	0	£265.10
P192-8M-50	5	192	488.92	487.55	-	130	60	-	20	0	£341.09

Material

Execution 1F & 6F: Steel with Zinc plated Steel flanges.

Execution 7 & 5: Cast Iron.

* Centre drilled or pilot bored

Other Info.

All dimensions subject to change.

If a dimension is critical to your application, please contact Sales for confirmation.



+44 (0)1246 455500



+44 (0)1246 455522

ondrives



sales@ondrives.com



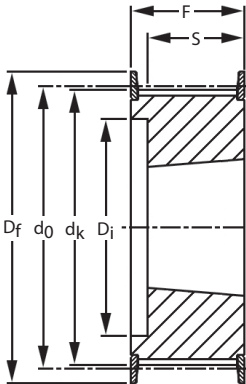
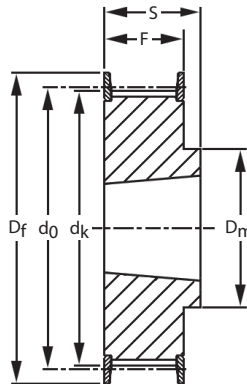
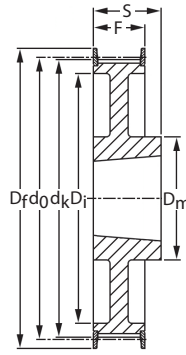
www.ondrives.com

HTD 8M

PULLEYS & BELTS

HTD Timing Pulleys with Taper Bore

8mm Pitch - To Suit 20mm Wide Belts

**Execution 2F****Execution 5F****Execution 6F**

Discounts:	6+ -7%	20+ -14%	40+ -20%	60+ -24%	100+ -27%
-------------------	---------------	-----------------	-----------------	-----------------	------------------

Part Number	Type	No. of Teeth z	To Suit Bush	PCD d_0	Tip Dia. d_k	Flange Dia. D_f	Hub Dia. D_m	Recess Dia. D_i	Face Width F	Bore Length S	No. of Flanges	Price Each 1 - 5
TL22-8M-20F	2F	22	1008	56.02	54.65	60	-	37	28	22	2	£18.49
TL24-8M-20F	2F	24	1108	61.12	59.75	66	-	44	28	22	2	£19.69
TL26-8M-20F	2F	26	1108	66.21	64.85	70	-	45	28	22	2	£21.22
TL28-8M-20F	2F	28	1108	71.30	70.08	75	-	50	28	22	2	£23.28
TL30-8M-20F	2F	30	1108	76.39	75.13	83	-	58	28	22	2	£26.33
TL32-8M-20F	2F	32	1610	81.49	80.16	87	-	63	28	25	2	£26.78
TL34-8M-20F	2F	34	1610	86.58	85.22	91	-	64	28	25	2	£29.71
TL36-8M-20F	2F	36	1610	91.67	90.30	97	-	68	28	25	2	£32.09
TL38-8M-20F	2F	38	1610	96.77	95.39	102	-	72	28	25	2	£34.98
TL40-8M-20F	2F	40	1610	101.86	100.49	106	-	76	28	25	2	£36.95
TL44-8M-20F	5F	44	2012	112.05	110.67	120	92	-	28	32	2	£41.70
TL48-8M-20F	5F	48	2012	122.23	120.86	128	96	-	28	32	2	£47.04
TL56-8M-20F	5F	56	2012	142.60	141.23	150	110	-	28	32	2	£56.00
TL64-8M-20F	6F	64	2012	162.97	161.60	168	110	137	28	32	2	£68.66
TL72-8M-20F	6F	72	2012	183.35	181.97	192	110	158	28	32	2	£78.31

Material

Steel with Zinc plated Steel flanges.

Other Info.

All dimensions subject to change.

If a dimension is critical to your application, please contact Sales for confirmation.



+44 (0)1246 455500



+44 (0)1246 455522



sales@ondrives.com



www.ondrives.com

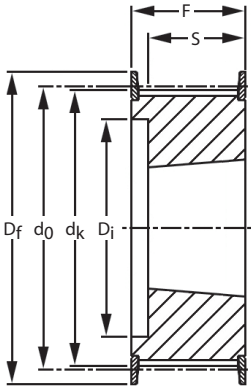
Product information updated April 2016 and subject to change. Please contact Sales for the latest prices and availability.

PULLEYS & BELTS

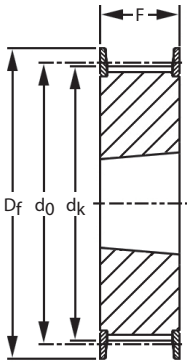
HTD Timing Pulleys with Taper Bore

8mm Pitch - To Suit 30mm Wide Belts

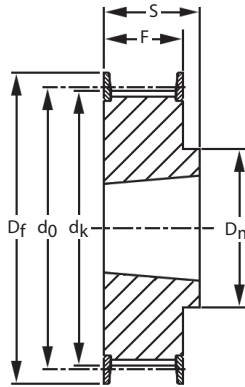
HTD 8M



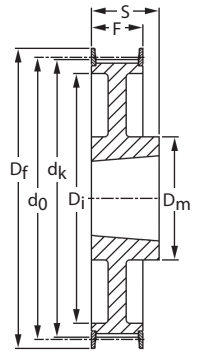
Execution 2F



Execution 1F



Execution 5F



Execution 6F

Discounts: 6+ -7% 20+ -14% 40+ -20% 60+ -24% 100+ -27%

Part Number	Type	No. of Teeth z	To Suit Bush	PCD d_0	Tip Dia. d_k	Flange Dia. D_f	Hub Dia. D_m	Recess Dia. D_i	Face Width F	Bore Length S	No. of Flanges	Price Each 1 - 5
TL22-8M-30F	2F	22	1008	56.02	54.65	60	-	37	38	22	2	£20.91
TL24-8M-30F	2F	24	1108	61.12	59.75	66	-	44	38	22	2	£22.12
TL26-8M-30F	2F	26	1108	66.21	64.85	70	-	44	38	22	2	£23.92
TL28-8M-30F	2F	28	1210	71.30	70.08	75	-	50	38	25	2	£25.17
TL30-8M-30F	1F	30	1615	76.39	75.13	83	-	-	38	38	2	£27.30
TL32-8M-30F	1F	32	1615	81.49	80.16	87	-	-	38	38	2	£29.47
TL34-8M-30F	1F	34	1615	86.58	85.22	91	-	-	38	38	2	£32.72
TL36-8M-30F	1F	36	1615	91.67	90.30	97	-	-	38	38	2	£35.77
TL38-8M-30F	1F	38	1615	96.77	95.39	102	-	-	38	38	2	£37.55
TL40-8M-30F	1F	40	1615	101.86	100.49	106	-	-	38	38	2	£41.70
TL44-8M-30F	2F	44	2012	112.05	110.67	120	-	86	38	32	2	£47.61
TL48-8M-30F	2F	48	2012	122.23	120.86	128	-	90	38	32	2	£53.27
TL56-8M-30F	2F	56	2012	142.60	141.23	150	-	110	38	32	2	£68.66
TL64-8M-30F	5F	64	2517	162.97	161.60	168	125	-	38	45	2	£81.38
TL72-8M-30F	6F	72	2517	183.35	181.97	192	125	158	38	45	2	£96.09

Material

Steel with Zinc plated Steel flanges.

Other Info.

All dimensions subject to change.

If a dimension is critical to your application, please contact Sales for confirmation.



+44 (0)1246 455500



+44 (0)1246 455522

ondrives



sales@ondrives.com



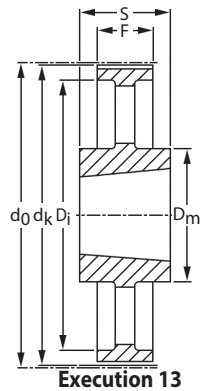
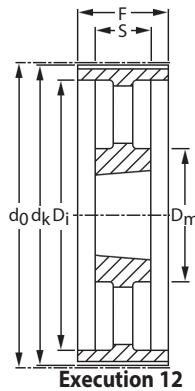
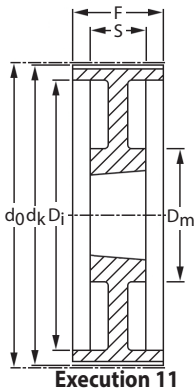
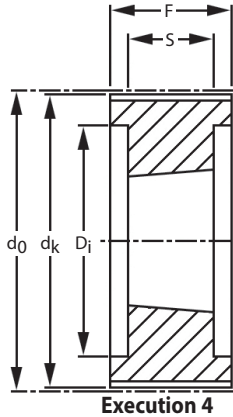
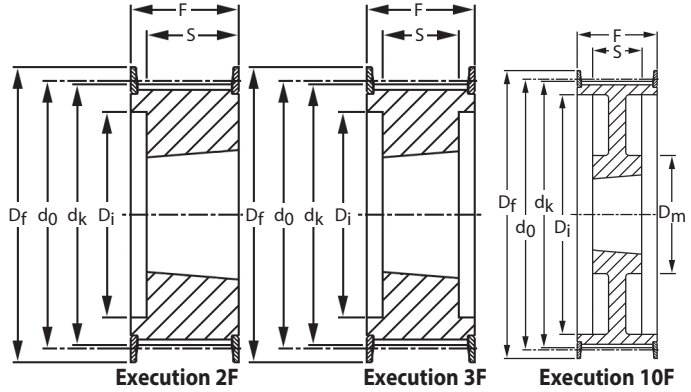
www.ondrives.com

HTD 8M

PULLEYS & BELTS

HTD Timing Pulleys with Taper Bore

8mm Pitch - To Suit 50mm Wide Belts



Discounts: 6+ -7% 20+ -14% 40+ -20% 60+ -24% 100+ -27%

Part Number	Type	No. of Teeth z	To Suit Bush	PCD d_0	Tip Dia. d_k	Flange Dia. D_f	Hub Dia. D_m	Recess Dia. D_j	Face Width F	Bore Length S	No. of Flanges	Price Each 1-5
TL28-8M-50F	2F	28	1210	71.30	70.08	75	-	50	60	25	2	£34.01
TL30-8M-50F	2F	30	1615	76.39	75.13	83	-	58	60	38	2	£37.31
TL32-8M-50F	2F	32	1615	81.49	80.16	87	-	63	60	38	2	£41.70
TL34-8M-50F	2F	34	1615	86.58	85.22	91	-	65	60	38	2	£42.73
TL36-8M-50F	2F	36	1615	91.67	90.30	97	-	68	60	38	2	£45.27
TL38-8M-50F	2F	38	1615	96.77	95.39	102	-	72	60	38	2	£50.90
TL40-8M-50F	3F	40	2012	101.86	100.49	106	-	80	60	32	2	£53.03
TL44-8M-50F	3F	44	2012	112.05	110.67	120	-	86	60	32	2	£59.50
TL48-8M-50F	3F	48	2012	122.23	120.86	128	-	95	60	32	2	£69.35
TL56-8M-50F	3F	56	2517	142.60	141.23	150	-	116	60	45	2	£86.44
TL64-8M-50F	3F	64	2517	162.97	161.60	168	-	136	60	45	2	£103.76
TL72-8M-50F	10F	72	2517	183.35	181.97	192	125	158	60	45	2	£121.62
TL80-8M-50	4	80	3020	203.72	202.35	-	180	180	60	51	0	£135.44
TL90-8M-50	11	90	3020	229.18	227.81	-	160	204	60	51	0	£154.49
TL112-8M-50	11	112	3020	285.21	283.83	-	170	254	60	51	0	£191.48
TL144-8M-50	12	144	3020	366.69	365.32	-	170	336	60	51	0	£243.80
TL168-8M-50	13	168	3525	427.81	426.44	-	198	395	60	65	0	£343.45
TL192-8M-50	13	192	3525	488.92	487.55	-	198	455	60	65	0	£415.81

Material

Execution 2F, 3F & 10F: Steel with Zinc plated Steel flanges.

Execution 4, 11, 12 & 13: Cast Iron.

Other Info.

All dimensions subject to change.

If a dimension is critical to your application, please contact Sales for confirmation.



+44 (0)1246 455500



+44 (0)1246 455522

ondrives



sales@ondrives.com



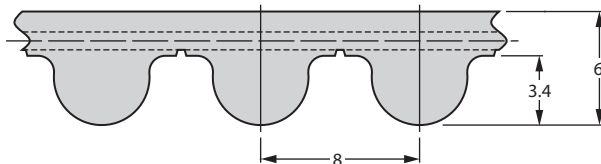
www.ondrives.com

PULLEYS & BELTS

HTD Rubber Timing Pulley Belts

8mm Pitch - 20mm Wide

HTD 8M



Discounts: 6+ -7% 20+ -14% 40+ -20% 60+ -24% 100+ -27%

Part Number	Belt Length	No. of Teeth	Price Each 1 - 5
HTD-480-8M/20	480	60	£10.53
HTD-560-8M/20	560	70	£12.10
HTD-600-8M/20	600	75	£12.58
HTD-640-8M/20	640	80	£13.15
HTD-720-8M/20	720	90	£14.27
HTD-800-8M/20	800	100	£15.07
HTD-880-8M/20	880	110	£16.08
HTD-960-8M/20	960	120	£17.24
HTD-1040-8M/20	1,040	130	£18.57
HTD-1120-8M/20	1,120	140	£19.54

Part Number	Belt Length	No. of Teeth	Price Each 1 - 5
HTD-1200-8M/20	1,200	150	£20.70
HTD-1280-8M/20	1,280	160	£21.79
HTD-1440-8M/20	1,440	180	£23.60
HTD-1600-8M/20	1,600	200	£25.77
HTD-1760-8M/20	1,760	220	£27.66
HTD-1800-8M/20	1,800	225	£28.26
HTD-2000-8M/20	2,000	250	£31.24
HTD-2400-8M/20	2,400	300	£36.63
HTD-2800-8M/20	2,800	350	£41.93

Material

Rubber back/teeth, glass fibre reinforced, nylon fabric tooth facing to DIN / ISO 5296.

Options

20, 30 & 50mm wide belts supplied as standard.
88mm belt widths also available. P.O.A.
Other belt lengths also available. P.O.A.



+44 (0)1246 455500



+44 (0)1246 455522

ondrives



sales@ondrives.com



www.ondrives.com

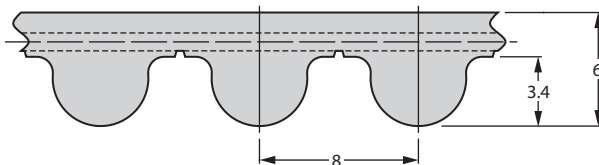
Product information updated April 2016 and subject to change. Please contact Sales for the latest prices and availability.

HTD 8M

PULLEYS & BELTS

HTD Rubber Timing Pulley Belts

8mm Pitch - 30mm Wide



Discounts: 6+ -7% 20+ -14% 40+ -20% 60+ -24% 100+ -27%

Part Number	Belt Length	No. of Teeth	Price Each 1 - 5
HTD-480-8M/30	480	60	£16.29
HTD-560-8M/30	560	70	£18.46
HTD-600-8M/30	600	75	£18.94
HTD-640-8M/30	640	80	£19.90
HTD-720-8M/30	720	90	£21.54
HTD-800-8M/30	800	100	£23.11
HTD-880-8M/30	880	110	£24.44
HTD-960-8M/30	960	120	£26.09
HTD-1040-8M/30	1,040	130	£27.90
HTD-1120-8M/30	1,120	140	£29.71

Part Number	Belt Length	No. of Teeth	Price Each 1 - 5
HTD-1200-8M/30	1,200	150	£31.24
HTD-1280-8M/30	1,280	160	£33.04
HTD-1440-8M/30	1,440	180	£35.90
HTD-1600-8M/30	1,600	200	£38.80
HTD-1760-8M/30	1,760	220	£42.17
HTD-1800-8M/30	1,800	225	£42.86
HTD-2000-8M/30	2,000	250	£47.27
HTD-2400-8M/30	2,400	300	£55.44
HTD-2800-8M/30	2,800	350	£63.24

Material

Rubber back/teeth, glass fibre reinforced, nylon fabric tooth facing to DIN / ISO 5296.

Options

20, 30 & 50mm wide belts supplied as standard.
88mm belt widths also available. P.O.A.
Other belt lengths also available. P.O.A.



+44 (0)1246 455500



+44 (0)1246 455522

ondrives



sales@ondrives.com



www.ondrives.com

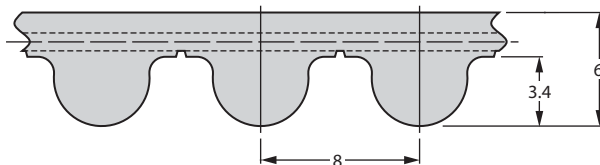
Product information updated April 2016 and subject to change. Please contact Sales for the latest prices and availability.

PULLEYS & BELTS

HTD Rubber Timing Pulley Belts

8mm Pitch - 50mm Wide

HTD 8M



Discounts: 6+ -7% 20+ -14% 40+ -20% 60+ -24% 100+ -27%

Part Number	Belt Length	No. of Teeth	Price Each 1 - 5
HTD-480-8M/50	480	60	£27.54
HTD-560-8M/50	560	70	£31.24
HTD-600-8M/50	600	75	£31.96
HTD-640-8M/50	640	80	£33.77
HTD-720-8M/50	720	90	£36.54
HTD-800-8M/50	800	100	£39.28
HTD-880-8M/50	880	110	£41.21
HTD-960-8M/50	960	120	£44.30
HTD-1040-8M/50	1,040	130	£47.44
HTD-1120-8M/50	1,120	140	£46.39

Part Number	Belt Length	No. of Teeth	Price Each 1 - 5
HTD-1200-8M/50	1,200	150	£52.95
HTD-1280-8M/50	1,280	160	£55.80
HTD-1440-8M/50	1,440	180	£60.83
HTD-1600-8M/50	1,600	200	£65.97
HTD-1760-8M/50	1,760	220	£71.24
HTD-1800-8M/50	1,800	225	£72.81
HTD-2000-8M/50	2,000	250	£79.88
HTD-2400-8M/50	2,400	300	£93.76
HTD-2800-8M/50	2,800	350	£107.30

Material

Rubber back/teeth, glass fibre reinforced, nylon fabric tooth facing to DIN / ISO 5296.

Options

20, 30 & 50mm wide belts supplied as standard.
88mm belt widths also available. P.O.A.
Other belt lengths also available. P.O.A.



+44 (0)1246 455500



+44 (0)1246 455522

ondrives



sales@ondrives.com



www.ondrives.com

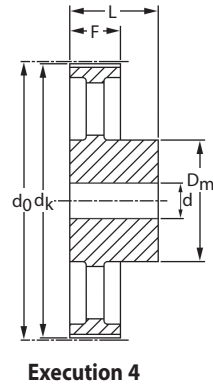
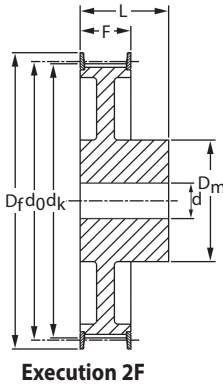
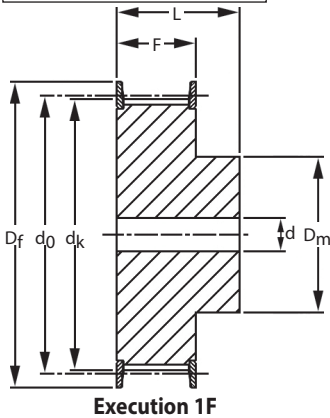
Product information updated April 2016 and subject to change. Please contact Sales for the latest prices and availability.

PULLEYS & BELTS

HTD 14M

HTD Timing Pulleys

14mm Pitch - To Suit 40mm Wide Belts



Discounts: 6+ -7% 20+ -14% 40+ -20% 60+ -24% 100+ -27%

Part Number	Type	No. of Teeth z	PCD d ₀	Tip Dia. d _k	Flange Dia. D _f	Hub Dia. D _m	Face Width F	Overall Width L	Bore d	No. of Flanges	Price Each 1 - 5
P28-14M-40F	1F	28	124.78	122.12	128	100	54	69	24	2	£58.17
P29-14M-40F	1F	29	129.23	126.57	138	100	54	69	24	2	£62.95
P30-14M-40F	1F	30	133.69	130.99	138	100	54	69	24	2	£67.90
P32-14M-40F	1F	32	142.60	139.88	154	100	54	69	24	2	£78.31
P34-14M-40F	1F	34	151.52	148.79	160	100	54	69	24	2	£84.59
P36-14M-40F	1F	36	160.43	157.68	168	100	54	69	24	2	£96.09
P38-14M-40F	1F	38	169.34	166.60	183	120	54	69	24	2	£110.23
P40-14M-40F	1F	40	178.25	175.49	188	120	54	69	24	2	£120.49
P44-14M-40F	1F	44	196.08	193.28	211	120	54	69	24	2	£140.23
P48-14M-40F	2F	48	213.90	211.11	226	135	54	69	24	2	£165.36
P56-14M-40F	2F	56	249.55	246.76	256	135	54	69	28	2	£210.18
P64-14M-40F	2F	64	285.21	282.41	296	135	54	69	28	2	£241.63
P72-14M-40	4	72	320.86	318.06	-	135	54	69	28	0	£213.80
P80-14M-40	4	80	356.51	353.71	-	135	54	69	28	0	£234.18
P90-14M-40	4	90	401.07	398.28	-	135	54	69	28	0	£259.67
P112-14M-40	4	112	499.11	496.32	-	135	54	69	28	0	£277.57
P144-14M-40	4	144	641.71	638.92	-	135	54	69	28	0	£387.44
P168-14M-40	4	168	748.66	745.87	-	135	54	69	28	0	£401.47

Material

Execution 1F & 2F: Steel with Zinc plated Steel flanges.
Execution 4: Cast Iron.

Other Info.

All dimensions subject to change.
 If a dimension is critical to your application, please contact Sales for confirmation.

Options

Other sizes available, P.O.A.



+44 (0)1246 455500



+44 (0)1246 455522

ondrives



sales@ondrives.com



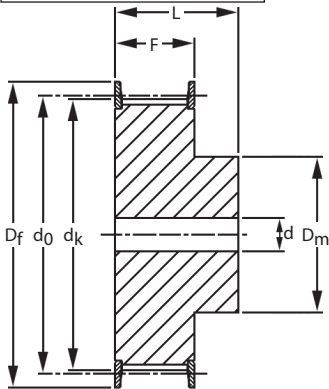
www.ondrives.com

PULLEYS & BELTS

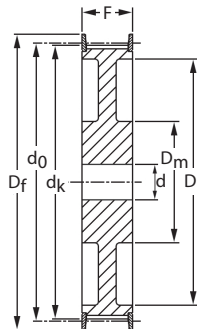
HTD Timing Pulleys

14mm Pitch - To Suit 55mm Wide Belts

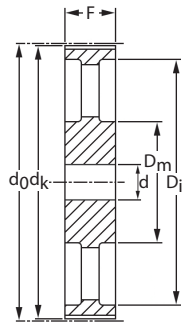
HTD 14M



Execution 1F



Execution 6F



Execution 5

Discounts: 6+ -7% 20+ -14% 40+ -20% 60+ -24% 100+ -27%

Part Number	Type	No. of Teeth z	PCD d ₀	Tip Dia. d _k	Flange Dia. D _f	Hub Dia. D _m	Face Width F	Overall Width L	Bore d	No. of Flanges	Price Each 1-5
P28-14M-55F	1F	28	124.78	122.12	128	100	70	85	24	2	£72.53
P29-14M-55F	1F	29	129.23	126.57	138	100	70	85	24	2	£77.60
P30-14M-55F	1F	30	133.69	130.99	138	100	70	85	24	2	£82.65
P32-14M-55F	1F	32	142.60	139.88	154	100	70	85	24	2	£93.51
P34-14M-55F	1F	34	151.52	148.79	160	100	70	85	24	2	£103.37
P36-14M-55F	1F	36	160.43	157.68	168	100	70	85	24	2	£118.31
P38-14M-55F	1F	38	169.34	166.60	183	120	70	85	24	2	£133.27
P40-14M-55F	1F	40	178.25	175.49	188	120	70	85	24	2	£146.50
P44-14M-55F	1F	44	196.08	193.28	211	120	70	85	24	2	£167.56
P48-14M-55F	6F	48	213.90	211.11	226	135	70	-	24	2	£196.55
P56-14M-55F	6F	56	249.55	246.76	256	135	70	-	28	2	£245.24
P64-14M-55F	6F	64	285.21	282.41	296	135	70	-	28	2	£250.06
P72-14M-55	5	72	320.86	318.06	-	135	70	-	28	0	£253.56
P80-14M-55	5	80	356.51	353.71	-	135	70	-	28	0	£279.93
P90-14M-55	5	90	401.07	398.28	-	135	70	-	28	0	£312.14
P112-14M-55	5	112	499.11	496.32	-	135	70	-	28	0	£332.60
P144-14M-55	5	144	641.71	638.92	-	135	70	-	28	0	£499.96
P168-14M-55	5	168	748.66	745.87	-	135	70	-	28	0	£650.04
P192-14M-55	5	192	855.62	852.82	-	135	70	-	28	0	£797.22
P216-14M-55*	5	216	962.57	959.76	-	150	70	-	28	0	£852.94

Material

Execution 1F & 6F: Steel with Zinc Plated Steel flanges.

Execution 5: Cast Iron.

Other Info.

All dimensions subject to change.

If a dimension is critical to your application, please contact Sales for confirmation.

Options

Other sizes available. P.O.A.

* Made to Order



+44 (0)1246 455500



+44 (0)1246 455522

ondrives



sales@ondrives.com



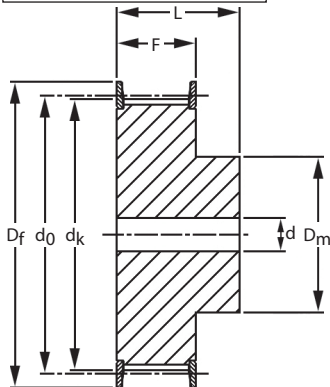
www.ondrives.com

PULLEYS & BELTS

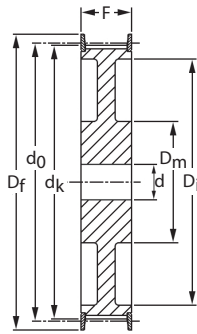
HTD 14M

HTD Timing Pulleys

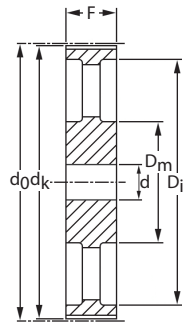
14mm Pitch - To Suit 85mm Wide Belts



Execution 1F



Execution 6F



Execution 5

Discounts: 6+ -7% 20+ -14% 40+ -20% 60+ -24% 100+ -27%

Part Number	Type	No. of Teeth z	PCD d ₀	Tip Dia. d _k	Flange Dia. D _f	Hub Dia. D _m	Face Width F	Overall Width L	Bore d	No. of Flanges	Price Each 1 - 5
P28-14M-85F	1F	28	124.78	122.12	128	100	102	117	-	2	£91.74
P29-14M-85F	1F	29	129.23	126.57	138	100	102	117	-	2	£100.23
P30-14M-85F	1F	30	133.69	130.99	138	100	102	117	-	2	£108.66
P32-14M-85F	1F	32	142.60	139.88	154	100	102	117	-	2	£122.98
P34-14M-85F	1F	34	151.52	148.79	160	100	102	117	-	2	£136.52
P36-14M-85F	1F	36	160.43	157.68	168	100	102	117	-	2	£158.12
P38-14M-85F	1F	38	169.34	166.60	183	120	102	117	-	2	£176.65
P40-14M-85F	1F	40	178.25	175.49	188	135	102	117	-	2	£195.91
P44-14M-85F	1F	44	196.08	193.28	211	135	102	117	-	2	£222.44
P48-14M-85F	6F	48	213.90	211.11	226	150	102	117	-	2	£287.69
P56-14M-85F	6F	56	249.55	246.76	256	150	102	-	32	2	£354.23
P64-14M-85F	6F	64	285.21	282.41	296	150	102	-	32	2	£365.00
P72-14M-85	5	72	320.86	318.06	-	150	102	-	32	0	£381.93
P80-14M-85	5	80	356.51	353.71	-	150	102	-	32	0	£421.33
P90-14M-85	5	90	401.07	398.28	-	150	102	-	32	0	£471.29
P112-14M-85	5	112	499.11	496.32	-	150	102	-	32	0	£500.48
P144-14M-85	5	144	641.71	638.92	-	150	102	-	32	0	£637.69
P168-14M-85	5	168	748.66	745.87	-	150	102	-	32	0	£849.81
P192-14M-85	5	192	855.62	852.82	-	165	102	-	32	0	£1,014.31
P216-14M-85*	5	216	962.57	959.76	-	165	102	-	32	0	£1,124.88

Material

Execution 1F & 6F: Steel with Zinc plated Steel flanges.

Execution 5: Cast Iron.

Other Info.

All dimensions subject to change.

If a dimension is critical to your application, please contact Sales for confirmation.

Options

Other sizes available, P.O.A.

* Made to Order



+44 (0)1246 455500



+44 (0)1246 455522

ondrives



sales@ondrives.com



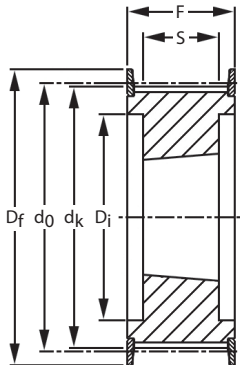
www.ondrives.com

PULLEYS & BELTS

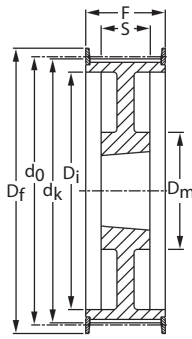
HTD Timing Pulleys with Taper Bore

14mm Pitch - To Suit 40mm Wide Belts

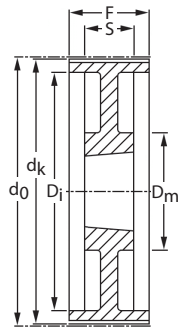
HTD 14M



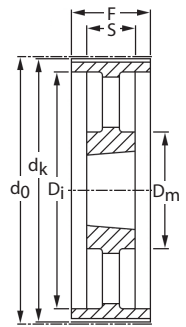
Execution 3F



Execution 10F



Execution 11



Execution 12

Discounts: 6+ -7% 20+ -14% 40+ -20% 60+ -24% 100+ -27%

Part Number	Type	No. of Teeth z	To Suit Bush	PCD do	Tip Dia. dk	Flange Dia. Df	Hub Dia. Dm	Recess Dia. Di	Face Width F	Bore Length S	No. of Flanges	Price Each 1 - 5
TL28-14M-40F	3F	28	2012	124.78	122.12	128	-	94	54	32	2	£73.41
TL29-14M-40F	3F	29	2012	129.23	126.57	138	-	98	54	32	2	£82.98
TL30-14M-40F	3F	30	2012	133.69	130.99	138	-	98	54	32	2	£90.94
TL32-14M-40F	3F	32	2012	142.60	139.88	154	-	108	54	32	2	£94.00
TL34-14M-40F	3F	34	2517	151.52	148.79	160	-	110	54	45	2	£94.80
TL36-14M-40F	3F	36	2517	160.43	157.68	168	-	120	54	45	2	£100.58
TL38-14M-40F	3F	38	2517	169.34	166.60	183	-	130	54	45	2	£103.00
TL40-14M-40F	3F	40	2517	178.25	175.49	188	-	138	54	45	2	£112.49
TL44-14M-40F	3F	44	3020	196.08	193.28	211	-	155	54	51	2	£138.90
TL48-14M-40F	3F	48	3020	213.90	211.11	226	-	170	54	51	2	£185.10
TL56-14M-40F	3F	56	3020	249.55	246.76	256	-	208	54	51	2	£233.01
TL64-14M-40F	10F	64	3020	285.21	282.41	296	170	240	54	51	2	£285.76
TL72-14M-40	11	72	3020	320.86	318.06	-	170	280	54	51	0	£222.56
TL80-14M-40	12	80	3020	356.51	353.71	-	170	315	54	51	0	£241.63
TL90-14M-40	12	90	3020	401.07	398.28	-	170	360	54	51	0	£269.19

Material

Execution 3F: Steel with Zinc plated Steel flanges.
Execution 10F: Cast Iron with Zinc plated Steel flanges.
Execution 11 & 12: Cast Iron.

Options

Other sizes available. P.O.A.

Other Info.

All dimensions subject to change.
 If a dimension is critical to your application, please contact Sales for confirmation.



+44 (0)1246 455500



+44 (0)1246 455522

ondrives



sales@ondrives.com



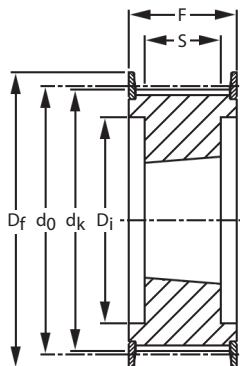
www.ondrives.com

PULLEYS & BELTS

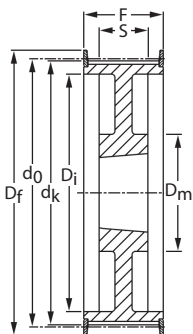
HTD Timing Pulleys with Taper Bore

14mm Pitch - To Suit 55mm Wide Belts

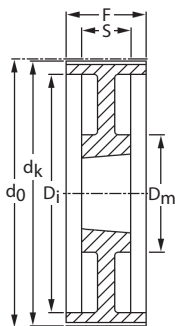
HTD 14M



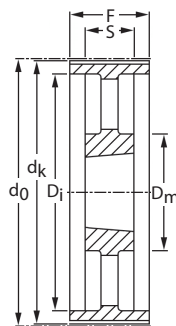
Execution 3F



Execution 10F



Execution 11



Execution 12

Discounts: 6+ -7% 20+ -14% 40+ -20% 60+ -24% 100+ -27%

Part Number	Type	No. of Teeth z	To Suit Bush	PCD d ₀	Tip Dia. d _k	Flange Dia. D _f	Hub Dia. D _m	Recess Dia. D _i	Face Width F	Bore Length S	No. of Flanges	Price Each 1 - 5
TL28-14M-55F	3F	28	2012	124.78	122.12	128	-	94	70	32	2	£96.00
TL29-14M-55F	3F	29	2012	129.23	126.57	138	-	100	70	32	2	£99.26
TL30-14M-55F	3F	30	2517	133.69	130.99	138	-	100	70	45	2	£100.79
TL32-14M-55F	3F	32	2517	142.60	139.88	154	-	108	70	45	2	£102.72
TL34-14M-55F	3F	34	2517	151.52	148.79	160	-	110	70	45	2	£109.19
TL36-14M-55F	3F	36	2517	160.43	157.68	168	-	120	70	45	2	£116.42
TL38-14M-55F	3F	38	2517	169.34	166.60	183	-	130	70	45	2	£123.51
TL40-14M-55F	3F	40	2517	178.25	175.49	188	-	138	70	45	2	£134.48
TL44-14M-55F	3F	44	3020	196.08	193.28	211	-	155	70	51	2	£165.04
TL48-14M-55F	3F	48	3020	213.90	211.11	226	-	170	70	51	2	£224.57
TL56-14M-55F	3F	56	3020	249.55	246.76	256	-	208	70	51	2	£278.84
TL64-14M-55F	10F	64	3020	285.21	282.41	296	170	240	70	51	2	£352.18
TL72-14M-55	11	72	3020	320.86	318.06	-	170	280	70	51	0	£253.28
TL80-14M-55	12	80	3020	356.51	353.71	-	170	315	70	51	0	£276.52
TL90-14M-55	12	90	3020	401.07	398.28	-	170	360	70	51	0	£319.77

Material

Execution 3F & 10F: Steel with Zinc plated Steel flanges.

Execution 11 & 12: Cast Iron.

Other Info.

All dimensions subject to change.

If a dimension is critical to your application, please contact Sales for confirmation.

Options

Other sizes available. P.O.A.



+44 (0) 1246 455500



+44 (0) 1246 455522

ondrives



sales@ondrives.com



www.ondrives.com

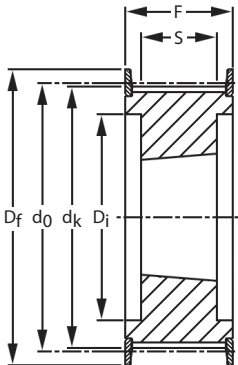
Product information updated April 2016 and subject to change. Please contact Sales for the latest prices and availability.

PULLEYS & BELTS

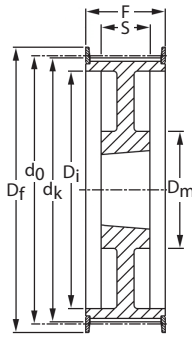
HTD Timing Pulleys with Taper Bore

14mm Pitch - To Suit 85mm Wide Belts

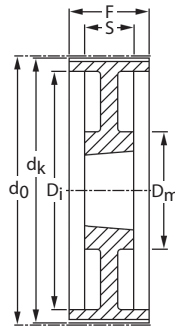
HTD 14M



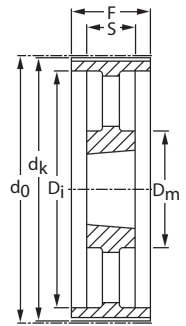
Execution 3F



Execution 10F



Execution 11



Execution 12

Discounts: 6+ -7% 20+ -14% 40+ -20% 60+ -24% 100+ -27%

Part Number	Type	No. of Teeth z	To Suit Bush	PCD do	Tip Dia. dk	Flange Dia. Df	Hub Dia. Dm	Recess Dia. Di	Face Width F	Bore Length S	No. of Flanges	Price Each 1 - 5
TL28-14M-85F	3F	28	2517	124.78	122.12	128	-	98	102	45	2	£112.04
TL29-14M-85F	3F	29	2517	129.23	126.57	138	-	100	102	45	2	£118.55
TL30-14M-85F	3F	30	2517	133.69	130.99	138	-	100	102	45	2	£121.62
TL32-14M-85F	3F	32	2517	142.60	139.88	154	-	108	102	45	2	£128.25
TL34-14M-85F	3F	34	2517	151.52	148.79	160	-	110	102	45	2	£144.13
TL36-14M-85F	3F	36	3020	160.43	157.68	168	-	125	102	51	2	£161.69
TL38-14M-85F	3F	38	3020	169.34	166.60	183	-	130	102	51	2	£167.41
TL40-14M-85F	3F	40	3020	178.25	175.49	188	-	138	102	51	2	£183.29
TL44-14M-85F	3F	44	3020	196.08	193.28	211	-	153	102	51	2	£217.58
TL48-14M-85F	3F	48	3020	213.90	211.11	226	-	171	102	51	2	£300.60
TL56-14M-85F	3F	56	3525	249.55	246.76	256	-	210	102	65	2	£384.26
TL64-14M-85F	10F	64	3525	285.21	282.41	296	190	240	102	65	2	£424.34
TL72-14M-85	11	72	3525	320.86	318.06	-	190	280	102	65	0	£436.88
TL80-14M-85	12	80	3525	356.51	353.71	-	190	315	102	65	0	£449.51
TL90-14M-85	12	90	3525	401.07	398.28	-	190	360	102	65	0	£463.98

Material

Execution 3F: Steel with Zinc plated Steel flanges.
Execution 10F: Cast Iron with Zinc plated Steel flanges.
Execution 11 & 12: Cast Iron.

Options

Other sizes available. P.O.A.

Other Info.

All dimensions subject to change.
 If a dimension is critical to your application, please contact Sales for confirmation.



+44 (0)1246 455500



+44 (0)1246 455522

ondrives



sales@ondrives.com



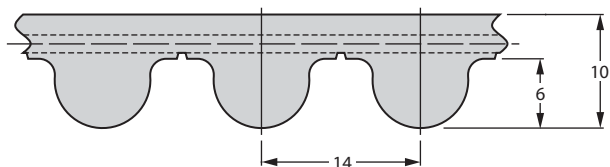
www.ondrives.com

HTD 14M

PULLEYS & BELTS

HTD Rubber Timing Pulley Belts

14mm Pitch - 40mm Wide

**Discounts: 6+ -7% 20+ -14% 40+ -20% 60+ -24% 100+ -27%**

Part Number	Belt Length	No. of Teeth	Price Each 1 - 5
HTD-966-14M/40	966	69	£81.81
HTD-1190-14M/40	1,190	85	£90.69
HTD-1400-14M/40	1,400	100	£96.65
HTD-1610-14M/40	1,610	115	£105.37
HTD-1764-14M/40	1,764	126	£113.13
HTD-1778-14M/40	1,778	127	£114.01
HTD-1890-14M/40	1,890	135	£117.23
HTD-2100-14M/40	2,100	150	£125.88
HTD-2310-14M/40	2,310	165	£134.48

Part Number	Belt Length	No. of Teeth	Price Each 1 - 5
HTD-2450-14M/40	2,450	175	£140.47
HTD-2590-14M/40	2,590	185	£142.88
HTD-2800-14M/40	2,800	200	£154.83
HTD-3150-14M/40	3,150	225	£163.15
HTD-3500-14M/40	3,500	250	£177.98
HTD-3850-14M/40	3,850	275	£195.59
HTD-4326-14M/40	4,326	309	£216.29
HTD-4578-14M/40	4,578	327	£225.06

Material

Rubber back/teeth, glass fibre reinforced, nylon fabric tooth facing to DIN / ISO 5296.

Options

40, 55 & 85mm wide belts supplied as standard.
115 & 170mm belt widths also available. P.O.A.
Other belt lengths also available. P.O.A.



+44 (0)1246 455500



+44 (0)1246 455522

ondrives

sales@ondrives.com



www.ondrives.com

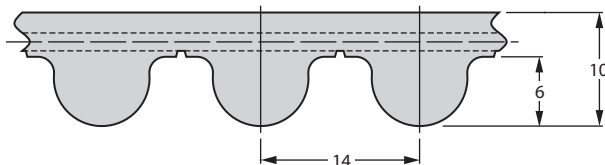
Product information updated April 2016 and subject to change. Please contact Sales for the latest prices and availability.

PULLEYS & BELTS

HTD Rubber Timing Pulley Belts

14mm Pitch - 55mm Wide

HTD 14M



Discounts: 6+ -7% 20+ -14% 40+ -20% 60+ -24% 100+ -27%

Part Number	Belt Length	No. of Teeth	Price Each 1 - 5
HTD-966-14M/55	966	69	£115.06
HTD-1190-14M/55	1,190	85	£124.07
HTD-1400-14M/55	1,400	100	£135.68
HTD-1610-14M/55	1,610	115	£148.15
HTD-1764-14M/55	1,764	126	£158.40
HTD-1778-14M/55	1,778	127	£159.65
HTD-1890-14M/55	1,890	135	£165.64
HTD-2100-14M/55	2,100	150	£177.25
HTD-2310-14M/55	2,310	165	£582.85

Part Number	Belt Length	No. of Teeth	Price Each 1 - 5
HTD-2450-14M/55	2,450	175	£194.51
HTD-2590-14M/55	2,590	185	£199.89
HTD-2800-14M/55	2,800	200	£216.05
HTD-3150-14M/55	3,150	225	£232.93
HTD-3500-14M/55	3,500	250	£250.42
HTD-3850-14M/55	3,850	275	£271.73
HTD-4326-14M/55	4,326	309	£683.24
HTD-4578-14M/55	4,578	327	£315.23

Material

Rubber back/teeth, glass fibre reinforced, nylon fabric tooth facing to DIN / ISO 5296.

Options

40, 55 & 85mm wide belts supplied as standard.
115 & 170mm belt widths also available. P.O.A.
Other belt lengths also available. P.O.A.



+44 (0)1246 455500



+44 (0)1246 455522

ondrives



sales@ondrives.com



www.ondrives.com

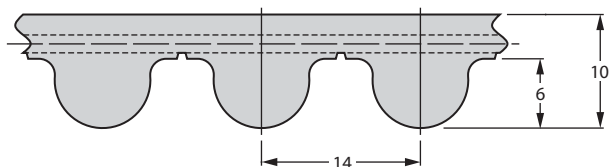
Product information updated April 2016 and subject to change. Please contact Sales for the latest prices and availability.

HTD 14M

PULLEYS & BELTS

HTD Rubber Timing Pulley Belts

14mm Pitch - 85mm Wide

**Discounts: 6+ -7% 20+ -14% 40+ -20% 60+ -24% 100+ -27%**

Part Number	Belt Length	No. of Teeth	Price Each 1 - 5
HTD-966-14M/85	966	69	£188.26
HTD-1190-14M/85	1,190	85	£194.51
HTD-1400-14M/85	1,400	100	£212.59
HTD-1610-14M/85	1,610	115	£230.45
HTD-1764-14M/85	1,764	126	£242.86
HTD-1778-14M/85	1,778	127	£244.79
HTD-1890-14M/85	1,890	135	£253.39
HTD-2100-14M/85	2,100	150	£274.75
HTD-2310-14M/85	2,310	165	£285.85

Part Number	Belt Length	No. of Teeth	Price Each 1 - 5
HTD-2450-14M/85	2,450	175	£303.69
HTD-2590-14M/85	2,590	185	£312.33
HTD-2800-14M/85	2,800	200	£345.26
HTD-3150-14M/85	3,150	225	£353.99
HTD-3500-14M/85	3,500	250	£389.61
HTD-3850-14M/85	3,850	275	£422.30
HTD-4326-14M/85	4,326	309	£463.34
HTD-4578-14M/85	4,578	327	£486.21

Material

Rubber back/teeth, glass fibre reinforced, nylon fabric tooth facing to DIN / ISO 5296.

Options

40, 55 & 85mm wide belts supplied as standard.
115 & 170mm belt widths also available. P.O.A.
Other belt lengths also available. P.O.A.



+44 (0)1246 455500



+44 (0)1246 455522

ondrives

sales@ondrives.com



www.ondrives.com

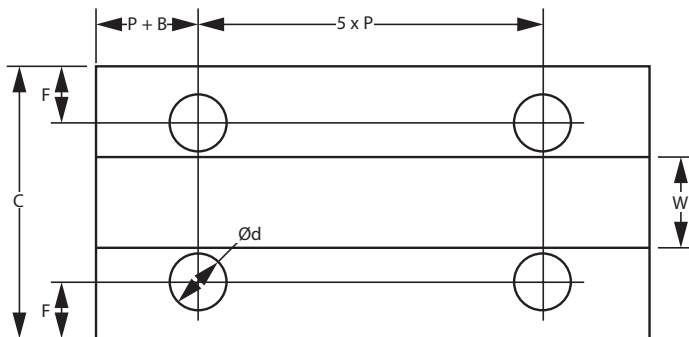
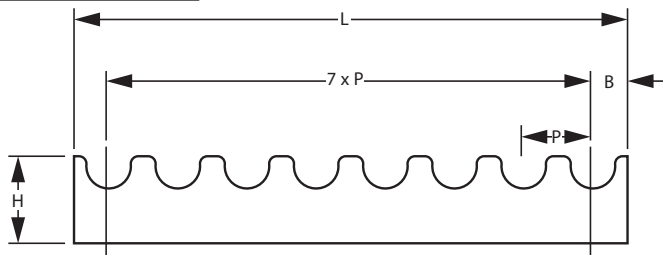
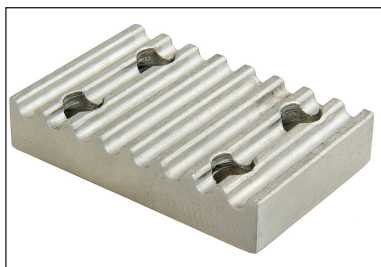
Product information updated April 2016 and subject to change. Please contact Sales for the latest prices and availability.

LC-M

PULLEYS & BELTS

Timing Belt Clamp Plates

HTD Series With Holes



Discounts: 6+ -7% 20+ -14% 40+ -20% 60+ -24% 100+ -27%

Part Number	Pitch P	Belt Width W	Clamp Width C	Clamp Length L	Clamp Height H	B	Hole Dia. Ød	Hole Distance F	Price Each 1 - 5
LC5M/09C	5	9	28	41.8	8	3.2	5.5	6	£15.32
LC5M/15C	5	15	34	41.8	8	3.2	5.5	6	£16.00
LC5M/25C	5	25	44	41.8	8	3.2	5.5	6	£16.65
LC8M/20C	8	20	45	66.0	15	5.0	9.0	8	£27.11
LC8M/30C	8	30	55	66.0	15	5.0	9.0	8	£28.73
LC8M/50C	8	50	75	66.0	15	5.0	9.0	8	£31.87
LC8M/85C	8	85	110	66.0	15	5.0	9.0	8	£48.77
LC14M/40C	14	40	71	116.0	22	9.0	11.0	10	£67.87
LC14M/55C	14	55	86	116.0	22	9.0	11.0	10	£73.76
LC14M/85C	14	85	116	116.0	22	9.0	11.0	10	£84.33
LC14M/115C	14	115	146	116.0	22	9.0	11.0	10	£94.20
LC14M/170C	14	170	201	116.0	22	9.0	11.0	10	£113.97

Material

Aluminium.

Options

Specials and reworked plates are available P.O.A.



+44 (0)1246 455500



+44 (0)1246 455522

ondrives



sales@ondrives.com



www.ondrives.com

Product information updated April 2016 and subject to change. Please contact Sales for the latest prices and availability.