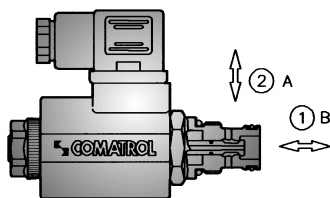
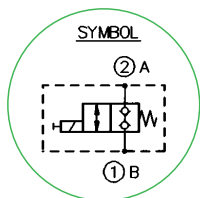


SOLENOID OPERATED DIRECTIONAL VALVES POPPET TYPE

TWO WAY - TWO POSITION

NCS

Type EVH 06

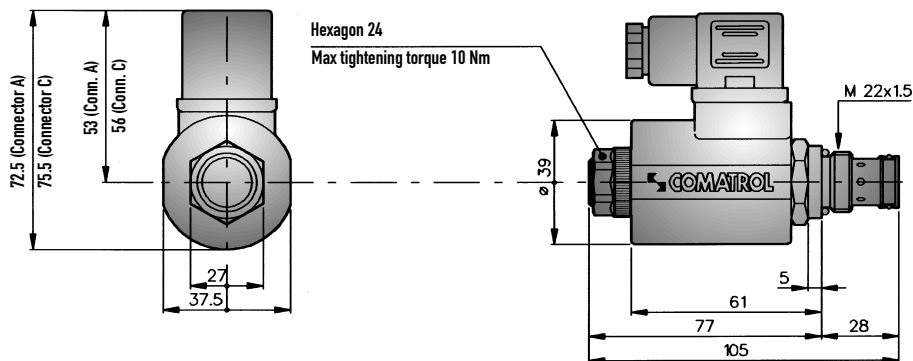


SIZE	06	
NORMAL PORT SIZE	6	
MAX FLOW RATE	l/min	25
	US gpm	6.5
MAX PRESSURE	bar	250
	psi	3600
CAVITY NUMBER	00.95	065
NORMALIZED CAVITY	NCS	06/2
MAX TIGHTENING TORQUE	Nm	50
WEIGHT INCLUDING COIL	kg	0.430
REF		
CAVITY DIMENSIONS	11.450	

VERSIONS

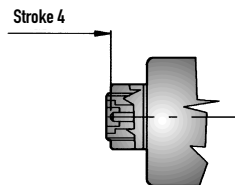
TYPE	HYDRAULIC SYMBOLS	FUNCTIONS OBTAINED WITH SOLENOID		MAX FLOW RATE l/min		MAX PRESSURE bar	
		De-energized	Energized	without Filter	with Filter	without Filter	with Filter
C5		② —○— ①	② —▶— ①	25	25	250	210
C5-S		② —○— ①	② —▶— ①	15	15	250	210

DIMENSIONS (mm)

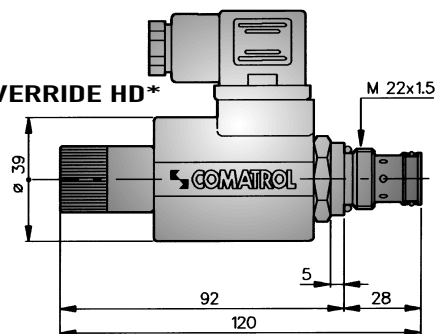


MANUAL OVERRIDE

plunger type control pushed to operate
(STANDARD)



MANUAL OVERRIDE HD*



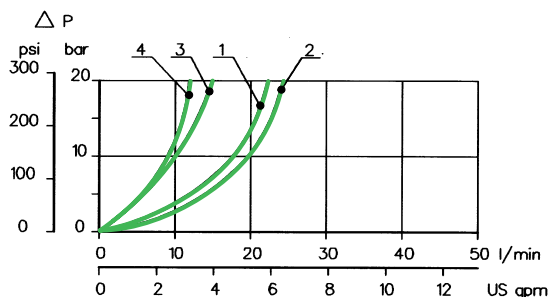
* to operate manual override, first unscrew the knob,
slip the coil out, then screw-in the knob until the valve opens.

CHARACTERISTIC OPERATING CURVES

Measurements effected at 20°C ambient temperature with mineral oil having viscosity of 26 cSt at 50°C.
Power input to coil: 90% of nominal value; temperature: 50°C. Cartridges only.

PRESSURE DROP

TYPE	Without Filter		With Filter	
	② → ①	① → ②	② → ①	① → ②
C5	2	2	1	1
C5-S	3	3	4	4



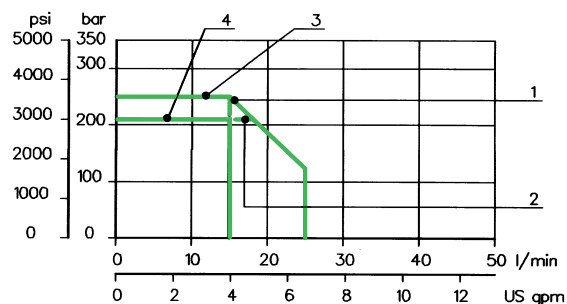
LIMITS OF APPLICATION

TYPE	Without Filter		With Filter	
	② → ①	① → ②	② → ①	① → ②
C5	1	1	2	2
C5-S	3	3	4	4

MAXIMUM PERMISSIBLE PRESSURE THROUGH PORT ① : 250 bar

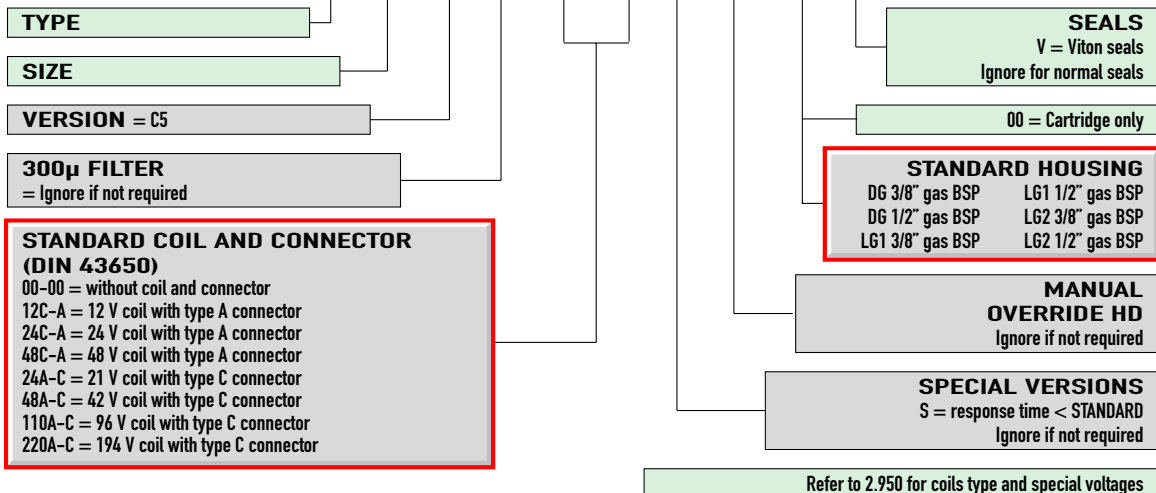
RESPONSE TIME (m. sec)

TYPE	Open	Close
C5	25 - 40	50 - 90
C5-S	25 - 30	25 - 40



EXAMPLE OF ORDER DESIGNATION EVH 06

EVH 06 / C5 - F - 24C - A - S - HD - 00 - V



SPARE PARTS

Set of external seals with back-up washers (Packs of minimum 10 set)
EVH 06/C5 = 230.00.044.0