

Material	Messing, vernickelt; Messing, blank; Edelstahl 1.4404; Aluminium; Polyamid
O-Ring	Nitril (weitere auf Anfrage)
Einsatztemperatur	-30°C bis +85°C - bei Messing, vernickelt (andere siehe Produktdokumentation)
Gewinde	Metrisch nach EN 60423 NPT nach ANSI B1.20.1
Schutzart	IP66
ATEX-Kennzeichnung	Ex II 2 GD / Ex e IIC Gb / Ex tb IIIC Db Ex I M2 / Ex e I/II Mb GB / Ex tb IIIC Db
Hinweis	Lieferung inkl. spezieller Gegenmutter.

Material	Nickel Plated Brass; Natural Brass; Stainless Steel 316L; Aluminium; Polyamide
O-Ring	Nitrile (Further on Request)
Operating Temperature	-30°C to +85°C - at Nickel Plated Brass (others see product documentation)
Thread	Metric acc. to EN 60423 NPT acc. to ANSI B1.20.1
Protection Class	IP66
ATEX Marking	Ex II 2 GD / Ex e IIC Gb / Ex tb IIIC Db Ex I M2 / Ex e I/II Mb GB / Ex tb IIIC Db
Note	Supplied incl. special locknut.

Für besondere Bedingungen oder Einschränkungen siehe entsprechende Produktdokumentation.

For specific conditions or limitations please see relevant product documentation.

Zulassungen / Approvals

ATEX



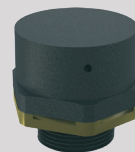
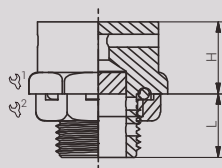
ERC



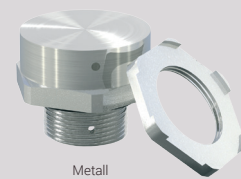
SIRA99ATEX3050X IECExSIR08.0024X TC.RU.C-GB.F506.B.00106 185887

Artikel-Nr. RST Article Code RST	Hersteller-Nr. Manufacturer Code	Hersteller Manufacturer	Gewinde Entry Thread			L (mm)	H (mm)	VPE PU		
			AG	(mm)	(mm)					
Messing, vernickelt / Nickel Plated Brass										
75000521	DPE1104S3	REDAPT	M 20x1.5	28.6	28.0	15.0	13.0	lose / loose		
75000526	DPE1105S3		M 25x1.5	34.9	33.0	15.0	13.0	lose / loose		
75000013	DPE1129S3		NPT 1/2"	28.6	28.0	15.0	13.0	lose / loose		
75000035	DPE1130S3		NPT 3/4"	34.9	33.0	15.0	13.0	lose / loose		
Messing / Brass										
77000521	DPE1004S3		M 20x1.5	28.6	28.0	15.0	13.0	lose / loose		
77000526	DPE1005S3		M 25x1.5	34.9	33.0	15.0	13.0	lose / loose		
77000013	DPE1029S3		NPT 1/2"	28.6	28.0	15.0	13.0	lose / loose		
77000035	DPE1030S3		NPT 3/4"	34.9	33.0	15.0	13.0	lose / loose		
Edelstahl 1.4404 / Stainless Steel 316L										
76000521	DPE3004S3	M 20x1.5	28.6	28.0	15.0	13.0	lose / loose			
76000526	DPE3005S3	M 25x1.5	34.9	33.0	15.0	13.0	lose / loose			
76000013	DPE3029S3	NPT 1/2"	28.6	28.0	15.0	13.0	lose / loose			
76000035	DPE3030S3	NPT 3/4"	34.9	33.0	15.0	13.0	lose / loose			
Aluminium / Aluminium										
74000521	DPE5004S3	M 20x1.5	28.6	28.0	15.0	13.0	lose / loose			
74000526	DPE5005S3	M 25x1.5	34.9	33.0	15.0	13.0	lose / loose			
74000013	DPE5029S3	NPT 1/2"	28.6	28.0	15.0	13.0	lose / loose			
74000035	DPE5030S3	NPT 3/4"	34.9	33.0	15.0	13.0	lose / loose			
Polyamid / Polyamide										
73000521	DPE4004S3	M 20x1.5	28.4	28.0	15.0	17.0	lose / loose			
73000526	DPE4005S3	M 25x1.5	34.7	33.0	15.0	17.0	lose / loose			
73000013	DPE4029S3	NPT 1/2"	28.4	28.0	15.0	17.0	lose / loose			
73000035	DPE4030S3	NPT 3/4"	34.7	33.0	15.0	17.0	lose / loose			

Weitere Produkte des Herstellers auf Anfrage. / Further products of the manufacturer on request.



Polyamid
Polyamide



Metall
Metal